

Mecalac

Mecalac MCL6

€ 39.500özel

Y?l 2023
Referans numaras? BM007521
Hours 5

Algemeen

Tür MCL6
Yer Veldhoven, Netherlands
Certificaat CE
Available at Boss Machinery! This Mecalac MCL6 Wheel Loader from 2023 has an engine power of 36 kW and counts 5 operational hours. The total weight of this Mecalac MCL6 is 3300 kg and the dimensions are 3.50 x 1.10 x 1.29 . Furthermore, this MCL6 is equipped with H?zl? kuplör. The Mecalac Wheel Loader also has a CE marking. Do you want more information or do you want to try the Mecalac MCL6 at our yard? Please let us know.

Maten / Gewichten

Boyutlar U*G*Y 3.50 x 1.10 x 1.29
A??rl?k 3300

Technische informatie

German Machine
Sürücü yap?land?rmalar? 4x4

Motor informatie

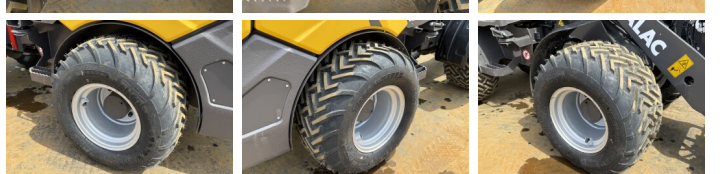
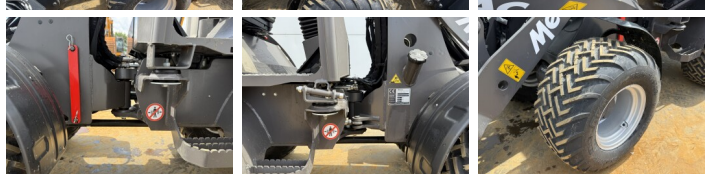
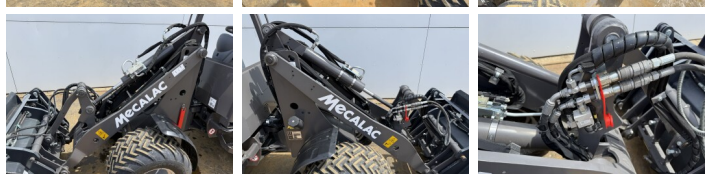
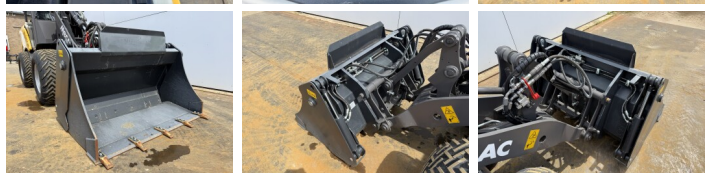
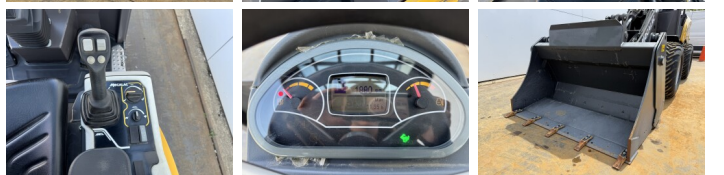
Motor markas? Perkins
Engine model TCD 1.7 L3
Silindirler 3
Turbo
KW cinsinden kapasite 36

Banden / Rupsen

100% 100% 31x15.50-15
100% 100% 31x15.50-15

BOSS

MACHINERY



Opties

H?zl? kuplör