

Hyundai

Hyundai R340L Smart

BOSS
MACHINERY

€ 113.950 özel

Y?l 2026
Referans numaras? BM006847
Hours 5

Algemeen

T?r R340L Smart
Yer Veldhoven, Netherlands
Certificaat NOT FOR SALE IN EU / NO CE MARK
Available at Boss Machinery! This used Hyundai R340L Smart Excavators from 2026 has an engine power of 206 kW and counts 5 operational hours. The total weight of this Hyundai R340L Smart is 33800 kg and the dimensions are 11.45 x 3.30 x 3.55. Furthermore, this R340L Smart is equipped with Klima, Ekstra hidrolik i?levi, ?eki? fonksiyonu. The Hyundai Excavators also has a NOT FOR SALE IN EU / NO CE MARK marking. Do you want more information or do you want to try the Hyundai R340L Smart at our yard? Please let us know.

Maten / Gewichten

A??rl?k 33800
Boyutlar U*G*Y 11.45 x 3.30 x 3.55

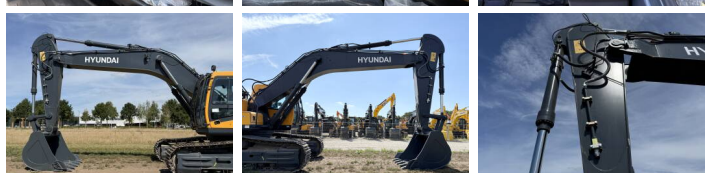
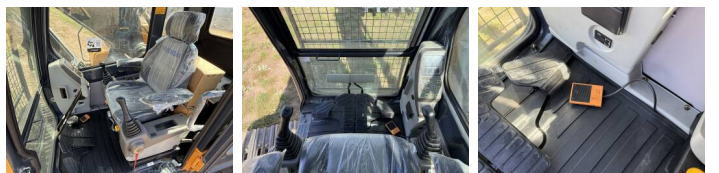
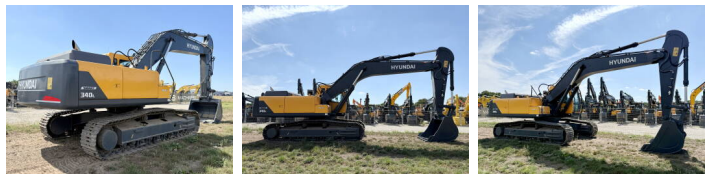
Technische informatie

Maximum Digging Depth: 6820 mm
Swing Speed: 9.5 rpm
Bucket Range cu.m: 1.44- 2.1

Motor informatie

Motor markas? Hyundai
Engine model D6AC-C1
Silindirler 6
Turbo
KW cinsinden kapasite 206

Banden / Rupsen



Sprocket %	100
Zincir %	100
Plaka %	100
Plaka geni?li?i	60 cm

Opties

Klima
Ekstra hidrolik i?levi
Çekiç fonksiyonu