

Hitachi

Hitachi KH150 GLS-2 - 30.3m Drill

€ 125.000 özel

Y?l 1977
Referans numaras? BM006411
Hours 5.453

Algemeen

T?r KH150 GLS-2 - 30.3m Drill
Yer Veldhoven, Netherlands
Dutch vehicle
Certificaat CE

Aç?klama

Available at Boss Machinery! This Hitachi KH150 GLS-2 - 30.3m Drill from 1977 has an engine power of - kW and counts 5453 operational hours. Always worked in The Netherlands. The total weight of this Hitachi KH150 GLS-2 - 30.3m Drill is - kg and the dimensions are 9.50 x 3.42 x 3.47. Furthermore, this KH150 GLS-2 - 30.3m Drill is equipped with Merkezi ya?lama. The Hitachi Drill also has a CE marking. Do you want more information or do you want to try the Hitachi KH150 GLS-2 - 30.3m Drill at our yard? Please let us know.

Maten / Gewichten

Boyutlar U*G*Y 9.50 x 3.42 x 3.47

Motor informatie

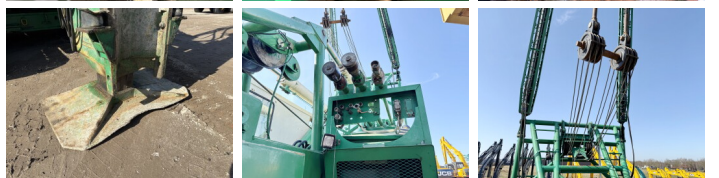
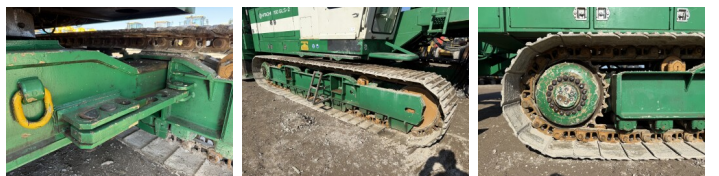
Motor markas? Cummins NTA 855 (Powerpack)
Engine model DAF 1160 (Machine)
Turbo

Banden / Rupsen

Plaka % 30
Sprocket % 80
Zincir % 80
Plaka geni?li?i 77 cm

BOSS

MACHINERY



Opties

Merkezi ya?lama