

Epiroc

# Epiroc ME5 Shotcrete

**BOSS**  
MACHINERY

Y?l **2018**  
Referans numaras? **BM007077**  
Hours **3.105**

## Algemeen

T?r ME5 Shotcrete  
Yer Veldhoven, Netherlands  
Certificaat CE  
Available at Boss Machinery! This Epiroc ME5 Shotcrete Concrete pump from 2018 has an engine power of Diesel: 74kw - Electric: 130kw kW and counts 3105 operational hours. The total weight of this Epiroc ME5 Shotcrete is 19255 kg and the dimensions are 11.65 x 2.27 x 3.32 . Furthermore, this ME5 Shotcrete is equipped with Merkezi ya?lama. The Epiroc Concrete pump also has a CE marking. Do you want more information or do you want to try the Epiroc ME5 Shotcrete at our yard? Please let us know.

## Maten / Gewichten

A??rl?k 19255  
Boyutlar U\*G\*Y 11.65 x 2.27 x 3.32

## Technische informatie

S?r?c? yap?land?rmalar? 4x4x4 (4 Wheel Steering)

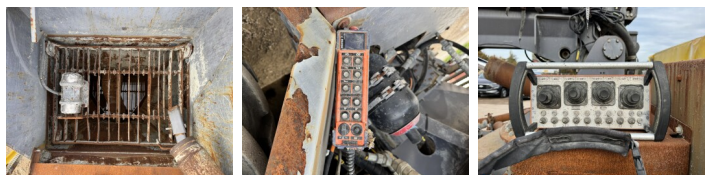
## Motor informatie

Motor markas? Deutz  
Engine model TCD 3.6  
Silindirler 4  
Turbo  
KW cinsinden kapasite Diesel: 74kw - Electric: 130kw

## Banden / Rupsen

70% 70% 405/70-20  
70% 70% 405/70-20

## Opties



Merkezi ya?lama