

Hyundai

Hyundai R340L Smart



€ 113.950???

???	2026
????? ??????	BM006847
?????	5

Algemeen

???

????? ??????????

Certificaat

?????????

?????????

R340L Smart
Veldhoven, Netherlands
NOT FOR SALE IN EU / NO CE MARK
Available at Boss Machinery! This used Hyundai R340L Smart Excavators from 2026 has an engine power of 206 kW and counts 5 operational hours. The total weight of this Hyundai R340L Smart is 33800 kg and the dimensions are 11.45 x 3.30 x 3.55. Furthermore, this R340L Smart is equipped with Airco, ?????????????? ?????????????????? ?????????? ??????????. The Hyundai Excavators also has a NOT FOR SALE IN EU / NO CE MARK marking. Do you want more information or do you want to try the Hyundai R340L Smart at our yard? Please let us know.

Maten / Gewichten

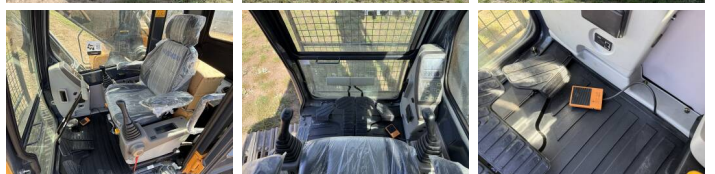
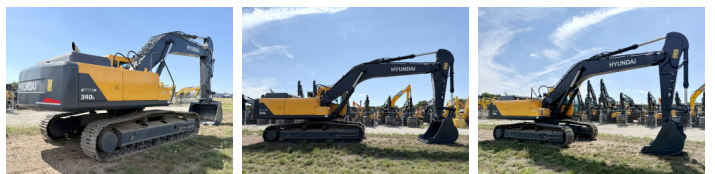
???????????? ?????????? ?*?*	11.45 x 3.30 x 3.55
???	33800

Technische informatie

Bucket Range cu.m:	1.44- 2.1
Maximum Digging Depth:	6820 mm
Swing Speed:	9.5 rpm

Motor informatie

????? ??????????	Hyundai
????????????? ??????	D6AC-C1
?????????	6
Turbo	
????????? ? ???	206



Banden / Rupsen

???????	100
???????	100
???	100
????? ?????	60 cm

Opties

Airco

????????????

???????????? ?????

?????? ?????