

Case

Case CX300C

BOSS
MACHINERY

??? 2011
????? ?????? BM005741
????? 20.033

Algemeen

??? CX300C
????? ?????????? Veldhoven, Netherlands
Dutch vehicle
Certificaat CE + EPA
Chassis nummer DCH300R6NBEAM1115
Available at Boss Machinery! This Case CX300C Material handler from 2011 has an engine power of 154 kW and counts 20033 operational hours. Always worked in The Netherlands. The total weight of this Case CX300C is 31000 kg and the dimensions are 10.65 x 3.18 x 3.35. Furthermore, this CX300C is equipped with ?????? ??????????, Radio, Airco, ?????????????? ?????????????????? ?????????? ??????????, ?????????? ??????????. The Case Material handler also has a CE + EPA marking. Do you want more information or do you want to try the Case CX300C at our yard? Please let us know.

Maten / Gewichten

??????????? ???????? ?*?*? 10.65 x 3.18 x 3.35
??? 31000

Motor informatie

????? ?????????? Isuzu
????????????? ???????? AL-6HK1X
????????? 6
????????? ? ??? 154

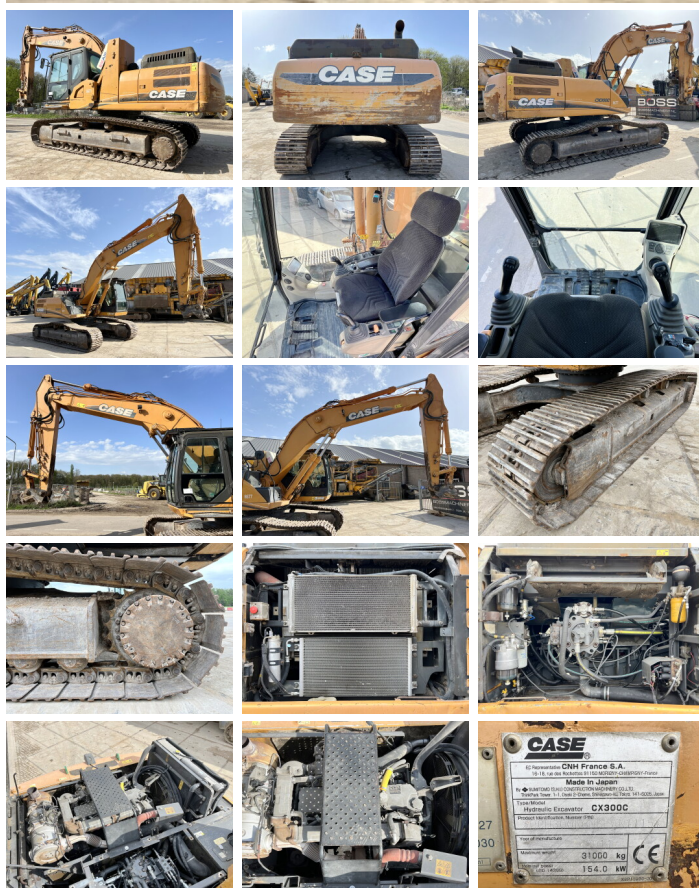
Banden / Rupsen

Opties

????????? ????????????

Radio

Airco



?????????
????????? ????
????? ?????