

Sennebogen

Sennebogen 825



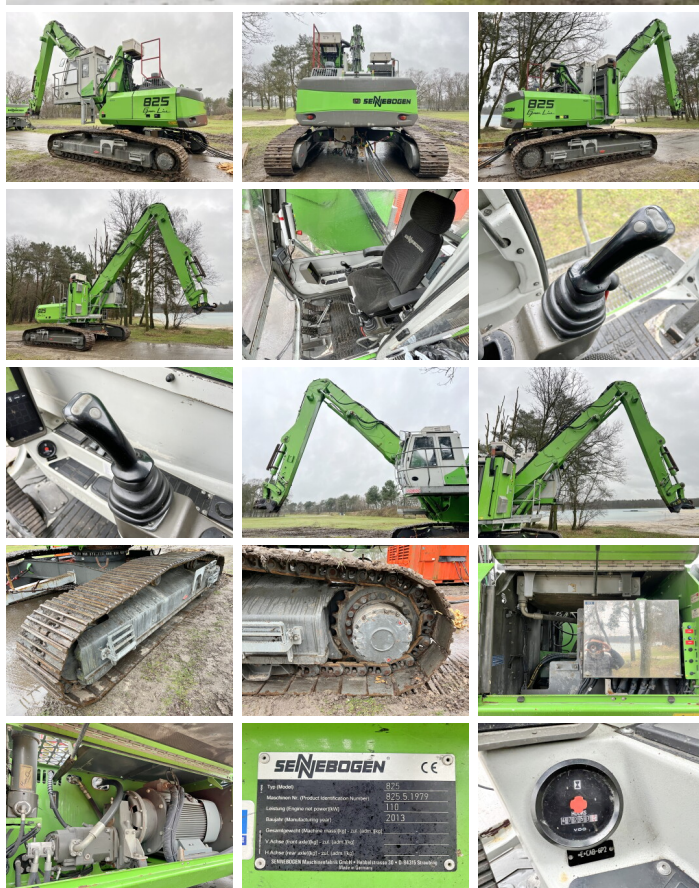
€ 60.000???

??? 2013
????? ?????? BM005645
????? 47.250

Algemeen

??? 825
 ????? ?????????? Veldhoven, Netherlands
 Certificaat CE
 Chassis nummer 82551979

Available at Boss Machinery! This Sennebogen 825 Material handler from 2013 has an engine power of 110 kW and counts 47250 operational hours. The total weight of this Sennebogen 825 is 28000 kg and the dimensions are 10.40 x 3.99 x 4.25. Furthermore, this 825 is equipped with ?????????????????? ?????????????????? ?????????????????? ??????????, ?????????????????? ??????????. The Sennebogen Material handler also has a CE marking. Do you want more information or do you want to try the Sennebogen 825 at our yard? Please let us know.



Maten / Gewichten

???????????? ????????? ?*?*? 10.40 x 3.99 x 4.25
??? 28000

Motor informatie

????????? ? ??? 110

Banden / Rupsen

????????????% 70
 ?????% 80
 ?????????? % 70
 ?????? ?????????? 60

Opties

?????????????????
 ?????????????????? ??????????
 ?????????????? ??????????

