

Caterpillar

Caterpillar 120H



???	2001
????? ??????	BM007902
?????	19.125

Algemeen

???	120H
????? ??????????	Veldhoven, Netherlands
Certificaat	CE

Available at Boss Machinery! This Caterpillar 120H Grader from 2001 has an engine power of 104 kW and counts 19125 operational hours. The total weight of this Caterpillar 120H is 14000 kg and the dimensions are 9.08 x 2.75 x 3.39. Furthermore, this 120H is equipped with Radio, ?????????????? ?????????????? ???????????. The Caterpillar Grader also has a CE marking. Do you want more information or do you want to try the Caterpillar 120H at our yard? Please let us know.

Maten / Gewichten

???	14000
????????????? ?????????? ?*?*	9.08 x 2.75 x 3.39

Technische informatie

????????????????? ??????????????	6x4
----------------------------------	-----

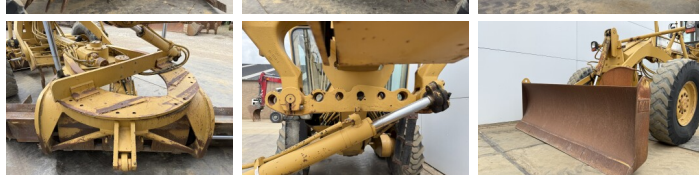
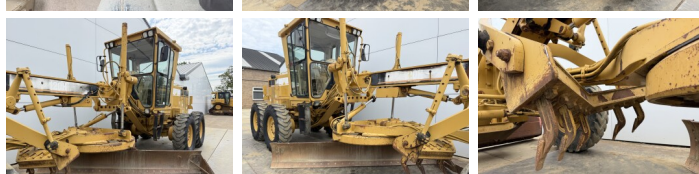
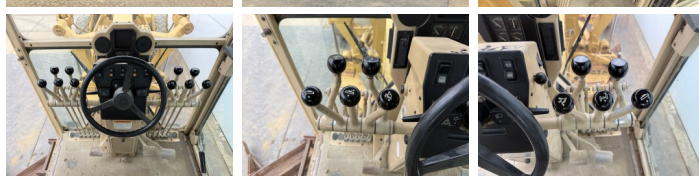
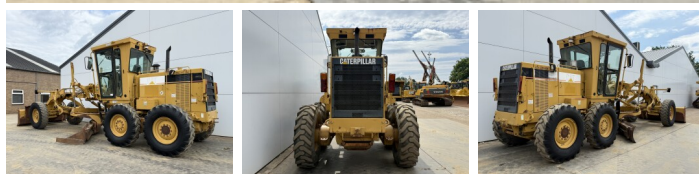
Motor informatie

????? ????????????	Caterpillar
????????????? ????????	3116
???????????	6
Turbo	
????????? ? ???	104

Banden / Rupsen

10%	10%	14.00-24
30%	30%	14.00-24
30%	30%	14.00-24

Opties



Radio

????????????

???????????? ??????