

Caterpillar

Caterpillar 120H



???	2001
????? ??????	BM007902
?????	19.125

Algemeen

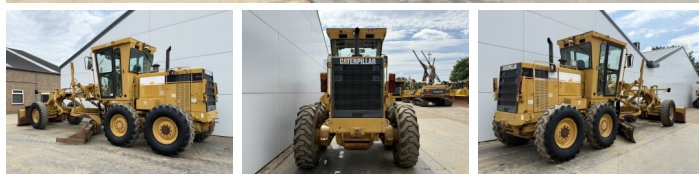
???

????? ??????????

Certificaat

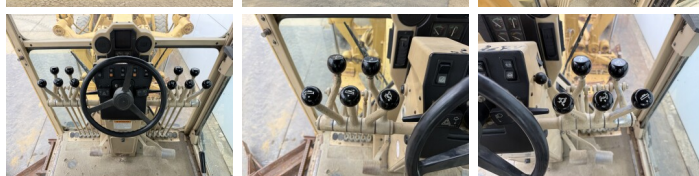
2001 - CE certified
Veldhoven, Netherlands
CE

Available at Boss Machinery! This Caterpillar 120H - CE certified Grader from 2001 has an engine power of 104 kW and counts 19125 operational hours. The total weight of this Caterpillar 120H - CE certified is 14000 kg and the dimensions are 9.08 x 2.75 x 3.39. Furthermore, this 120H - CE certified is equipped with Radio, ?????????????? ?????????????? ??????????. The Caterpillar Grader also has a CE marking. Do you want more information or do you want to try the Caterpillar 120H - CE certified at our yard? Please let us know.



Maten / Gewichten

?????????? ??????? ?*?*?	9.08 x 2.75 x 3.39
???	14000



Technische informatie

????????????? ????????????	6x4
----------------------------	-----



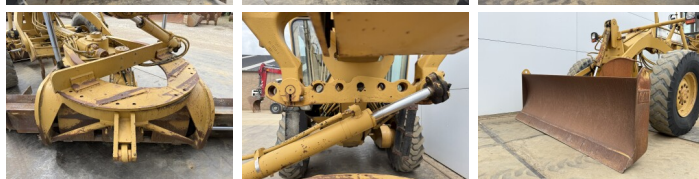
Motor informatie

????? ??????????	Caterpillar
????????????? ???????	3116
??????????	6
Turbo	
????????? ? ???	104



Banden / Rupsen

10% 10%	14.00-24
30% 30%	14.00-24
30% 30%	14.00-24



Opties



Radio

????????????

???????????? ?????