

Hitachi

Hitachi KH150 GLS-2 - 30.3m Drill

€ 125.000???.

??? 1977
????? ?????? BM006411
????? 5.453

Algemeen

??? KH150 GLS-2 - 30.3m Drill
????? ?????????? Veldhoven, Netherlands
Dutch vehicle
Certificaat

CE
Available at Boss Machinery! This Hitachi KH150 GLS-2 - 30.3m Drill from 1977 has an engine power of - kW and counts 5453 operational hours. Always worked in The Netherlands. The total weight of this Hitachi KH150 GLS-2 - 30.3m Drill is - kg and the dimensions are 9.50 x 3.42 x 3.47. Furthermore, this KH150 GLS-2 - 30.3m Drill is equipped with ?????????? ??????. The Hitachi Drill also has a CE marking. Do you want more information or do you want to try the Hitachi KH150 GLS-2 - 30.3m Drill at our yard? Please let us know.

?????????

Maten / Gewichten

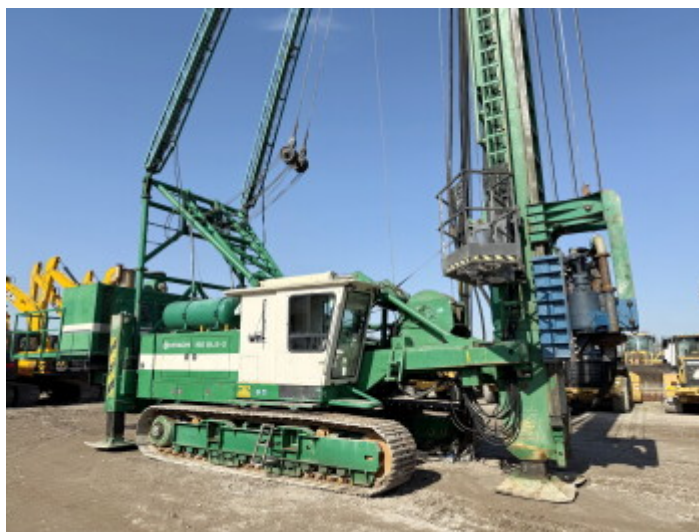
???????????? ??????? ?*?*? 9.50 x 3.42 x 3.47

Motor informatie

????? ?????????? Cummins NTA 855 (Powerpack)
????????????? ??????? DAF 1160 (Machine)
Turbo

Banden / Rupsen

????????? % 30
????????????? 80
?????% 80
?????? ?????????? 77 cm



Opties

?????????? ??????