

Epiroc

Epiroc ME5 Shotcrete



???	2018
????? ??????	BM007077
?????	3.105

Algemeen

???	ME5 Shotcrete
????? ??????????	Veldhoven, Netherlands
Certificaat	CE

Available at Boss Machinery! This Epiroc ME5 Shotcrete Concrete pump from 2018 has an engine power of Diesel: 74kw - Electric: 130kw kW and counts 3105 operational hours. The total weight of this Epiroc ME5 Shotcrete is 19255 kg and the dimensions are 11.65 x 2.27 x 3.32 . Furthermore, this ME5 Shotcrete is equipped with ?????????? ??????. The Epiroc Concrete pump also has a CE marking. Do you want more information or do you want to try the Epiroc ME5 Shotcrete at our yard? Please let us know.

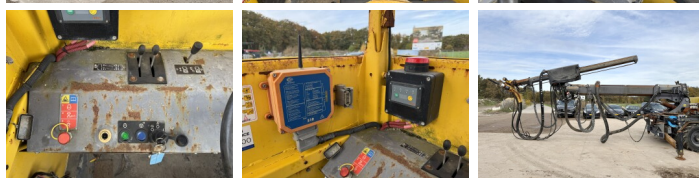


?????????



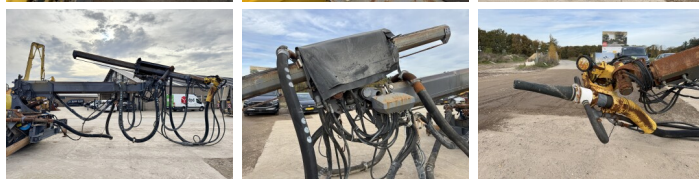
Maten / Gewichten

???	19255
???????????? ?????????? ?*?*	11.65 x 2.27 x 3.32



Technische informatie

???????????????? ??????????????	4x4x4 (4 Wheel Steering)
---------------------------------	--------------------------



Motor informatie

????? ??????????	Deutz
????????????? ??????	TCD 3.6
???????????	4
Turbo	
????????? ? ???	Diesel: 74kw - Electric: 130kw



Banden / Rupsen

70% 70%	405/70-20
70% 70%	405/70-20



Opties



??????????