

Magni

# Magni RTH5.21

**BOSS**  
MACHINERY

€ 59.500 Exclusiv

An 2014  
Num?r de referin?? BM006915  
Ore 3.965

## Algemeen

Tip RTH5.21  
Location Veldhoven, Netherlands  
Certificaat CE

Descriere

Disponibil din stoc la Boss Machinery! Aceast? Magni RTH5.21 Telescopic handlers din 2014 are o putere a motorului de 95 kW ?i 3965 ore de func?ionare. Greutatea total? a acestui Magni RTH5.21 este 16500 kg ?i dimensiunile sunt 8.80 x 2.38 x 3.07. În plus, acest RTH5.21 este echipat cu Airco, Radio, Air Suspension Seat, Cuplor rapid, Func?ie suplimentar? hidraulic?. Magni Telescopic handlers are, de asemenea, o certificare CE . Dori?i mai multe informa?ii sau dori?i s? încerca?i Magni RTH5.21 la sediul nostru? V? rug?m s? ne contacta?i.

## Maten / Gewichten

Greutate 16500  
Dimensiuni L\*Î\*L 8.80 x 2.38 x 3.07

## Technische informatie

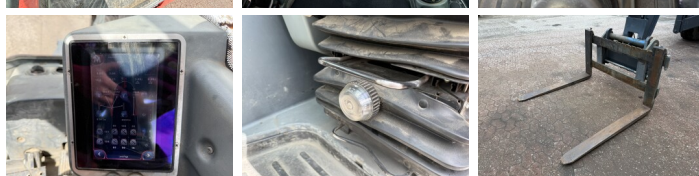
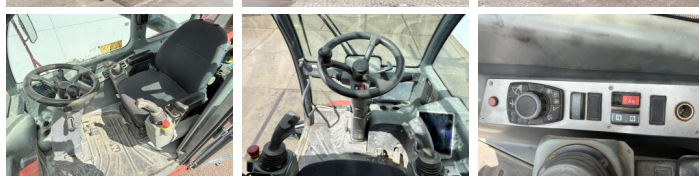
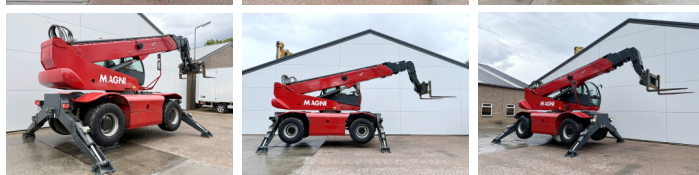
Consola de configurare 4x4 (4 Wheel Steering / Crab Mode)

## Motor informatie

Motor marca Mercedes-Benz  
Model de motor OM 924 LA  
Cilindri 4  
Turbo  
Capacitate în kW 95

## Banden / Rupsen

20% 20% 445/65R22.5  
20% 20% 445/65R22.5



## Opties

---

Airco

Radio

Air Suspension Seat

Cuplor rapid

Func?ie suplimentar?  
hidraulic?