

Hyundai

Hyundai R215L Smart X Plus *2026 Model*

€ 69.500excl.

Ano **2026**
Número de referência **BM007548**
Horas **5**

Algemeen

Tipo R215L Smart X Plus *2026 Model*

Localização Veldhoven, Netherlands

Descrição Available at Boss Machinery! This Hyundai R215L Smart X Plus *2026 Model* Excavators from 2026 has an engine power of 148 kW and counts 5 operational hours. The total weight of this Hyundai R215L Smart X Plus *2026 Model* is 22200 kg and the dimensions are 9.51 x 3.00 x 3.33. Furthermore, this R215L Smart X Plus *2026 Model* is equipped with Radio, Função hidráulica extra, Função do martelo. Do you want more information or do you want to try the Hyundai R215L Smart X Plus *2026 Model* at our yard? Please let us know.

Maten / Gewichten

Dimensões C*L*A 9.51 x 3.00 x 3.33
Peso 22200

Motor informatie

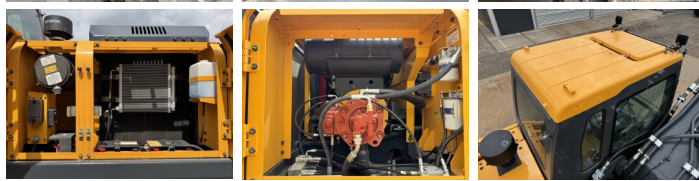
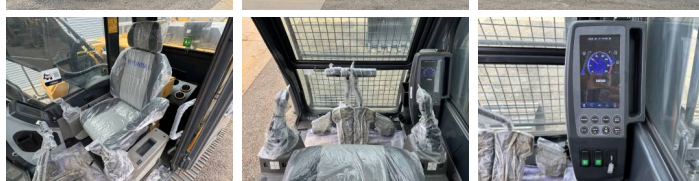
Marca do motor Cummins
Modelo de motor 6BTAA 5.9 148C
Cilindros 6
Turbo
Capacidade em kW 148

Banden / Rupsen

Plate% 100
Roda dentada% 100
Cadeia % 100
Largura da placa 60 cm

BOSS

MACHINERY



Opties

Radio

Função hidráulica extra

Função do martelo