

Hyundai

Hyundai R340L Smart

BOSS
MACHINERY

€ 113.950excl.

Ano **2026**
Número de referência **BM006847**
Horas **5**

Algemeen

Tipo R340L Smart
Localização Veldhoven, Netherlands
Certificaat NOT FOR SALE IN EU / NO CE MARK
Available at Boss Machinery! This used Hyundai R340L Smart Excavators from 2026 has an engine power of 206 kW and counts 5 operational hours. The total weight of this Hyundai R340L Smart is 33800 kg and the dimensions are 11.45 x 3.30 x 3.55. Furthermore, this R340L Smart is equipped with Airco, Função hidráulica extra, Função do martelo. The Hyundai Excavators also has a NOT FOR SALE IN EU / NO CE MARK marking. Do you want more information or do you want to try the Hyundai R340L Smart at our yard? Please let us know.

Maten / Gewichten

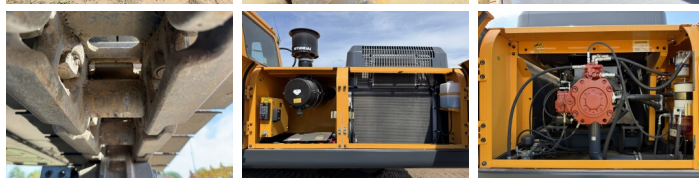
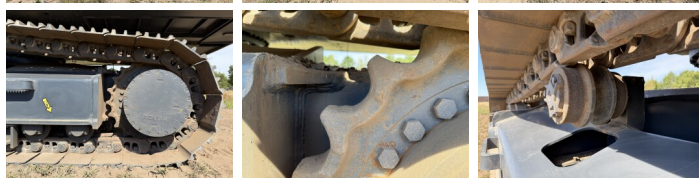
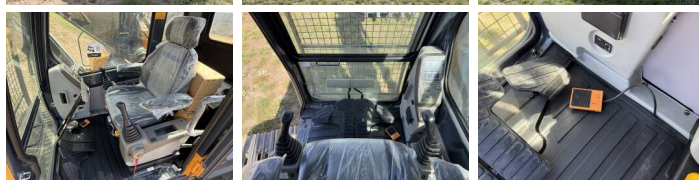
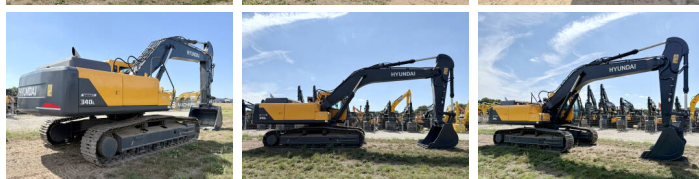
Peso 33800
Dimensões C*L*A 11.45 x 3.30 x 3.55

Technische informatie

Maximum Digging Depth: 6820 mm
Swing Speed: 9.5 rpm
Bucket Range cu.m: 1.44- 2.1

Motor informatie

Marca do motor Hyundai
Modelo de motor D6AC-C1
Cilindros 6
Turbo
Capacidade em kW 206



Banden / Rupsen

Roda dentada%	100
Cadeia %	100
Plate%	100
Largura da placa	60 cm

Opties

Airco

Função hidráulica extra

Função do martelo