

Magni

Magni RTH5.21

BOSS
MACHINERY

€ 59.500excl.

Ano **2014**
Número de referência **BM006915**
Horas **3.965**

Algemeen

Tipo **RTH5.21**
Localização **Veldhoven, Netherlands**
Certificaat **CE**

Descrição

Available at Boss Machinery! This Magni RTH5.21 Telescopic handlers from 2014 has an engine power of 95 kW and counts 3965 operational hours. The total weight of this Magni RTH5.21 is 16500 kg and the dimensions are 8.80 x 2.38 x 3.07. Furthermore, this RTH5.21 is equipped with Radio, Air Suspension Seat, Engate rápido, Airco, Função hidráulica extra. The Magni Telescopic handlers also has a CE marking. Do you want more information or do you want to try the Magni RTH5.21 at our yard? Please let us know.

Maten / Gewichten

Dimensões C*L*A **8.80 x 2.38 x 3.07**
Peso **16500**

Technische informatie

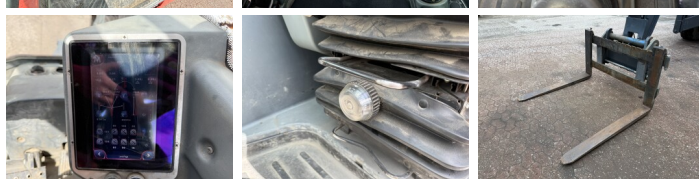
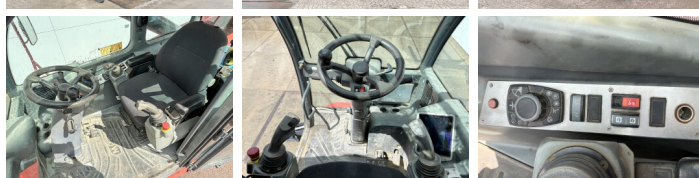
Configurações de drive **4x4 (4 Wheel Steering / Crab Mode)**

Motor informatie

Marca do motor **Mercedes-Benz**
Modelo de motor **OM 924 LA**
Cilindros **4**
Turbo
Capacidade em kW **95**

Banden / Rupsen

20% 20% **445/65R22.5**
20% 20% **445/65R22.5**



Opties

Radio

Air Suspension Seat

Engate rápido

Airco

Função hidráulica extra