

Caterpillar

Caterpillar 120H

BOSS
MACHINERY

Ano **2001**
Número de referência **BM007902**
Horas **19.125**

Algemeen

Tipo 120H - CE certified
Localização Veldhoven, Netherlands
Certificaat CE

Available at Boss Machinery! This Caterpillar 120H - CE certified Grader from 2001 has an engine power of 104 kW and counts 19125 operational hours. The total weight of this Caterpillar 120H - CE certified is 14000 kg and the dimensions are 9.08 x 2.75 x 3.39. Furthermore, this 120H - CE certified is equipped with Radio, Função hidráulica extra. The Caterpillar Grader also has a CE marking. Do you want more information or do you want to try the Caterpillar 120H - CE certified at our yard? Please let us know.

Descrição

Maten / Gewichten

Dimensões C*L*A 9.08 x 2.75 x 3.39
Peso 14000

Technische informatie

Configurações de drive 6x4

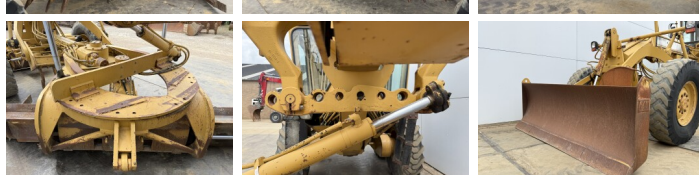
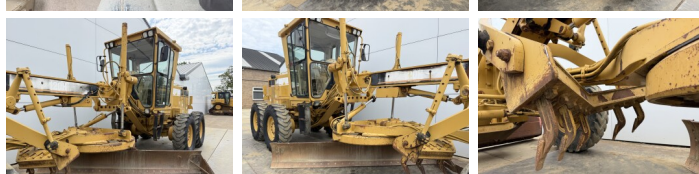
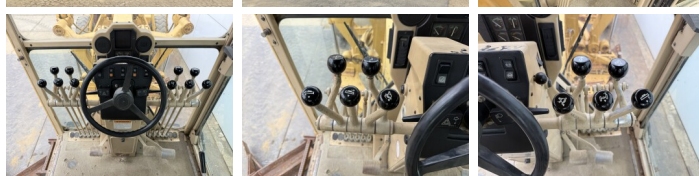
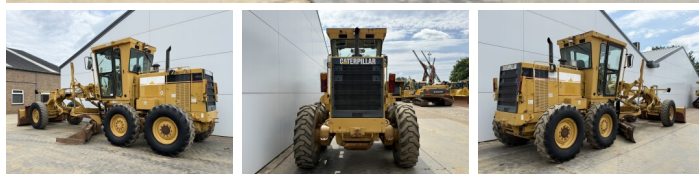
Motor informatie

Marca do motor Caterpillar
Modelo de motor 3116
Cilindros 6
Turbo
Capacidade em kW 104

Banden / Rupsen

10% 10% 14.00-24
30% 30% 14.00-24
30% 30% 14.00-24

Opties



Radio
Função hidráulica extra