

Hitachi

Hitachi KH150 GLS-2 - 30.3m Drill

€ 125.000excl.

Ano **1977**
Número de referência **BM006411**
Horas **5.453**

Algemeen

Tipo **KH150 GLS-2 - 30.3m Drill**
Localização **Veldhoven, Netherlands**
Dutch vehicle
Certificaat **CE**

Descrição

Available at Boss Machinery! This Hitachi KH150 GLS-2 - 30.3m Drill from 1977 has an engine power of - kW and counts 5453 operational hours. Always worked in The Netherlands. The total weight of this Hitachi KH150 GLS-2 - 30.3m Drill is - kg and the dimensions are 9.50 x 3.42 x 3.47. Furthermore, this KH150 GLS-2 - 30.3m Drill is equipped with Lubrificação central. The Hitachi Drill also has a CE marking. Do you want more information or do you want to try the Hitachi KH150 GLS-2 - 30.3m Drill at our yard? Please let us know.

Maten / Gewichten

Dimensões C*L*A **9.50 x 3.42 x 3.47**

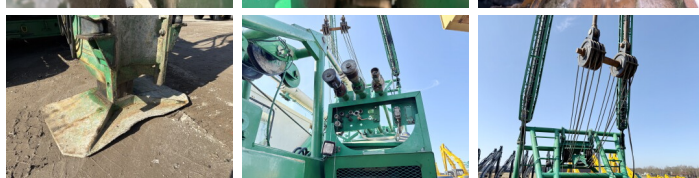
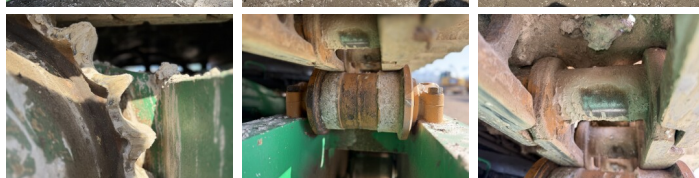
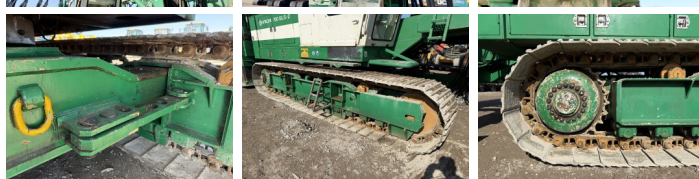
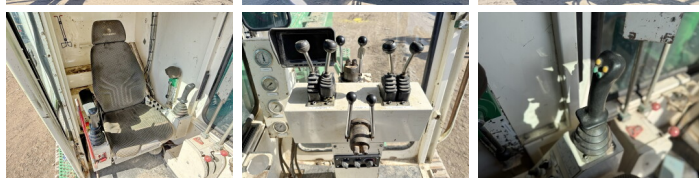
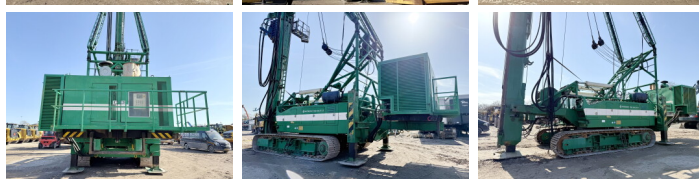
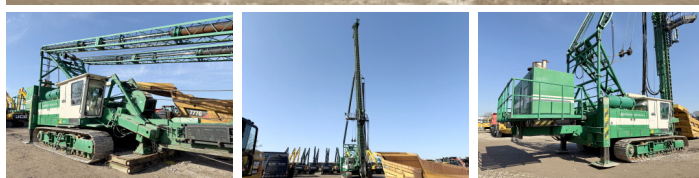
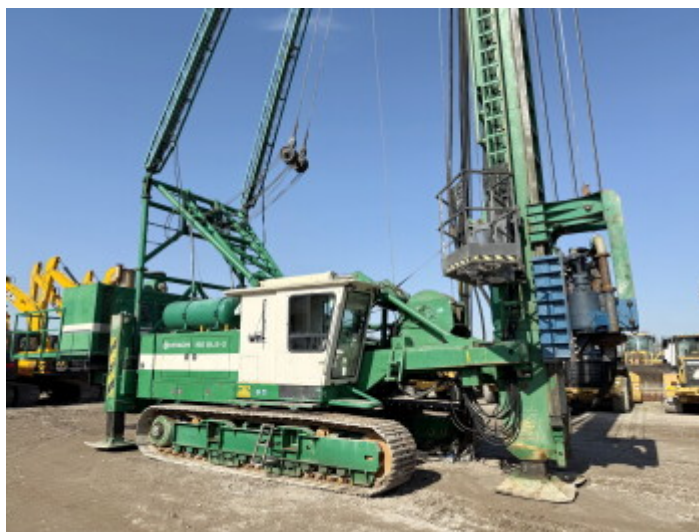
Motor informatie

Marca do motor **Cummins NTA 855 (Powerpack)**
Modelo de motor **DAF 1160 (Machine)**
Turbo

Banden / Rupsen

Plate% **30**
Roda dentada% **80**
Cadeia % **80**
Largura da placa **77 cm**

BOSS
MACHINERY



Opties

Lubrificação central