

Epiroc

Epiroc ME5 Shotcrete

BOSS
MACHINERY

Ano **2018**
Número de referência **BM007077**
Horas **3.105**

Algemeen

Tipo ME5 Shotcrete
Localização Veldhoven, Netherlands
Certificaat CE

Available at Boss Machinery! This Epiroc ME5 Shotcrete Concrete pump from 2018 has an engine power of Diesel: 74kw - Electric: 130kw kW and counts 3105 operational hours. The total weight of this Epiroc ME5 Shotcrete is 19255 kg and the dimensions are 11.65 x 2.27 x 3.32 . Furthermore, this ME5 Shotcrete is equipped with Lubrificação central. The Epiroc Concrete pump also has a CE marking. Do you want more information or do you want to try the Epiroc ME5 Shotcrete at our yard? Please let us know.

Descrição

Maten / Gewichten

Dimensões C*L*A 11.65 x 2.27 x 3.32
Peso 19255

Technische informatie

Configurações de drive 4x4x4 (4 Wheel Steering)

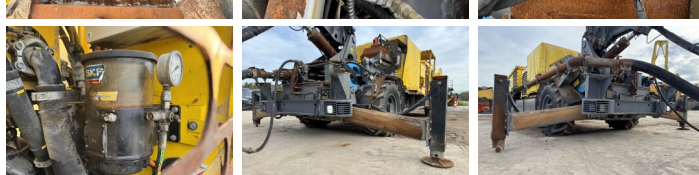
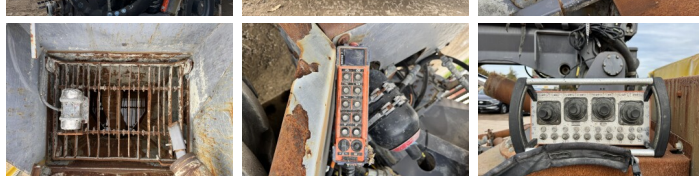
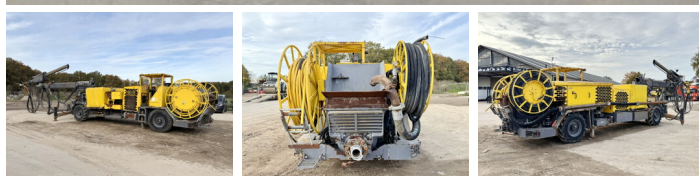
Motor informatie

Marca do motor Deutz
Modelo de motor TCD 3.6
Cilindros 4
Turbo
Capacidade em kW Diesel: 74kw - Electric: 130kw

Banden / Rupsen

70% 70% 405/70-20
70% 70% 405/70-20

Opties



Lubrificação central