

Kobelco

Kobelco SK300NLC-10

BOSS
MACHINERY

Rok **2015**
Numer referencyjny **BM007235**
Godziny **10.474**

Algemeen

Typ SK300NLC-10
Lokalizacja Veldhoven, Netherlands
Certificaat CE + EPA

Available at Boss Machinery! This Kobelco SK300NLC-10 Excavators from 2015 has an engine power of 200 kW and counts 10474 operational hours. The total weight of this Kobelco SK300NLC-10 is 31200 kg and the dimensions are 10.75 x 2.99 x 3.24. Furthermore, this SK300NLC-10 is equipped with Heated Seat, Szybkoz??cze, Camera, Radio, Dodatkowa funkcja hydrauliczna, Funkcja m?ota, Centralne smarowanie. The Kobelco Excavators also has a CE + EPA marking. Do you want more information or do you want to try the Kobelco SK300NLC-10 at our yard? Please let us know.

Maten / Gewichten

Wymiary D*S*W 10.75 x 2.99 x 3.24
Waga 31200

Motor informatie

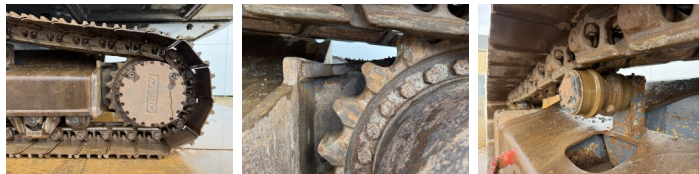
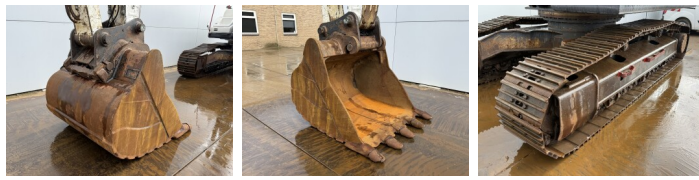
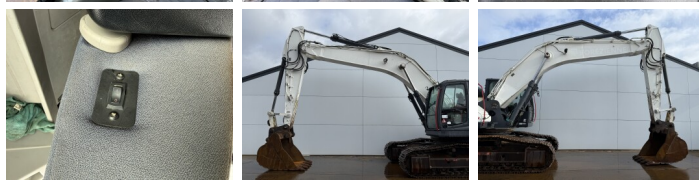
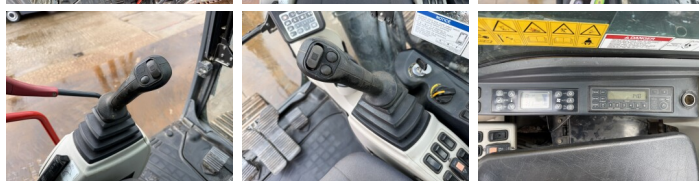
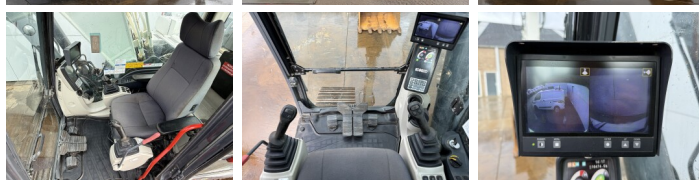
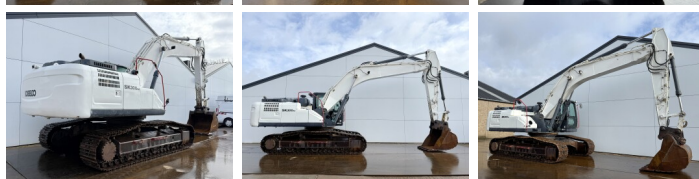
Marka silnika Hino
Model silnika J08E-VV
Cylindry 6
Turbo
Wydajno?? w kW 200

Banden / Rupsen

P?yta % 70
Sprocket% 70
?a?cuch% 70
Szeroko?? p?yty 60 cm

Opties

Heated Seat



Szybkoz??cze

Camera

Radio

Dodatkowa funkcja
hydrauliczna

Funkcja m?ota

Centralne smarowanie