

Hyundai

Hyundai R340L Smart

BOSS
MACHINERY

€ 113.950 wy?czny podatek

Rok **2026**
Numer referencyjny **BM006847**
Godziny **5**

Algemeen

Typ R340L Smart
Lokalizacja Veldhoven, Netherlands
Certificaat NOT FOR SALE IN EU / NO CE MARK
Available at Boss Machinery! This used Hyundai R340L Smart Excavators from 2026 has an engine power of 206 kW and counts 5 operational hours. The total weight of this Hyundai R340L Smart is 33800 kg and the dimensions are 11.45 x 3.30 x 3.55. Furthermore, this R340L Smart is equipped with Airco, Dodatkowa funkcja hydrauliczna, Funkcja m?ota. The Hyundai Excavators also has a NOT FOR SALE IN EU / NO CE MARK marking. Do you want more information or do you want to try the Hyundai R340L Smart at our yard? Please let us know.

Maten / Gewichten

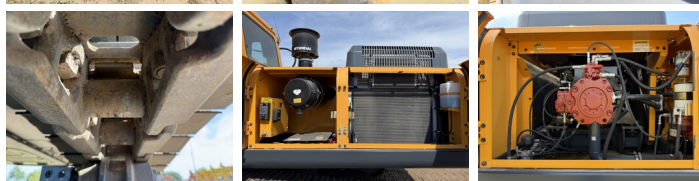
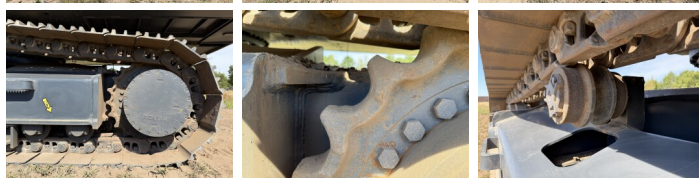
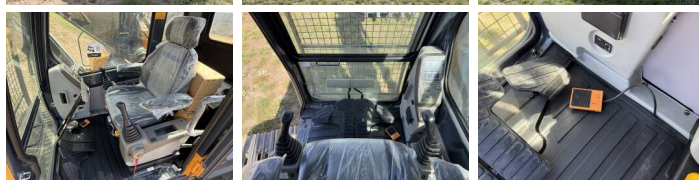
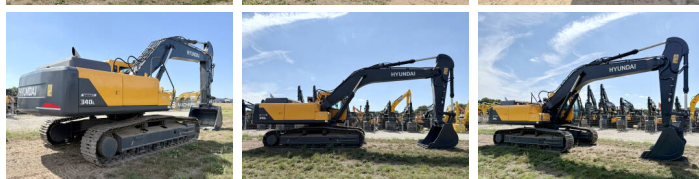
Wymiary D*S*W 11.45 x 3.30 x 3.55
Waga 33800

Technische informatie

Bucket Range cu.m: 1.44- 2.1
Maximum Digging Depth: 6820 mm
Swing Speed: 9.5 rpm

Motor informatie

Marka silnika Hyundai
Model silnika D6AC-C1
Cylindry 6
Turbo
Wydajno?? w kW 206



Banden / Rupsen

Płyta %	100
Sprocket%	100
Łańcuch%	100
Szerokość płyty	60 cm

Opties

Airco

Dodatkowa funkcja
hydrauliczna

Funkcja młota