

Magni

Magni RTH5.21

BOSS
MACHINERY

€ 59.500 wy??czny podatek

Rok **2014**
Numer referencyjny **BM006915**
Godziny **3.965**

Algemeen

Typ **RTH5.21**
Lokalizacja **Veldhoven, Netherlands**
Certificaat **CE**

Opis

Available at Boss Machinery! This Magni RTH5.21 Telescopic handlers from 2014 has an engine power of 95 kW and counts 3965 operational hours. The total weight of this Magni RTH5.21 is 16500 kg and the dimensions are 8.80 x 2.38 x 3.07. Furthermore, this RTH5.21 is equipped with Airco, Radio, Air Suspension Seat, Szybkoz??cze, Dodatkowa funkcja hydrauliczna. The Magni Telescopic handlers also has a CE marking. Do you want more information or do you want to try the Magni RTH5.21 at our yard? Please let us know.

Maten / Gewichten

Wymiary D*S*W **8.80 x 2.38 x 3.07**
Waga **16500**

Technische informatie

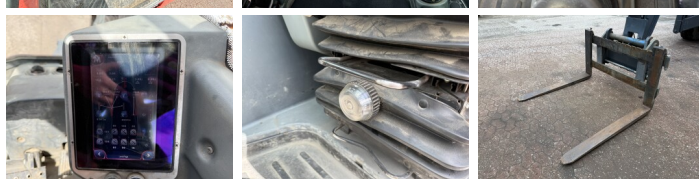
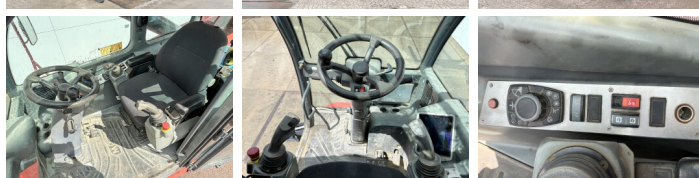
Konfiguracje dysków **4x4 (4 Wheel Steering / Crab Mode)**

Motor informatie

Marka silnika **Mercedes-Benz**
Model silnika **OM 924 LA**
Cylindry **4**
Turbo
Wydajno?? w kW **95**

Banden / Rupsen

20% 20% **445/65R22.5**
20% 20% **445/65R22.5**



Opties

Airco

Radio

Air Suspension Seat

Szybkoz??cze

Dodatkowa funkcja
hydrauliczna