

Caterpillar

# Caterpillar 120H

**BOSS**  
MACHINERY

Rok **2001**  
Numer referencyjny **BM007902**  
Godziny **19.125**

## Algemeen

Typ **120H**  
Lokalizacja **Veldhoven, Netherlands**  
Certificaat **CE**  
Available at Boss Machinery! This Caterpillar 120H Grader from 2001 has an engine power of 104 kW and counts 19125 operational hours. The total weight of this Caterpillar 120H is 14000 kg and the dimensions are 9.08 x 2.75 x 3.39. Furthermore, this 120H is equipped with Radio, Dodatkowa funkcja hydrauliczna. The Caterpillar Grader also has a CE marking. Do you want more information or do you want to try the Caterpillar 120H at our yard? Please let us know.

## Maten / Gewichten

Waga **14000**  
Wymiary D\*S\*W **9.08 x 2.75 x 3.39**

## Technische informatie

Konfiguracje dysków **6x4**

## Motor informatie

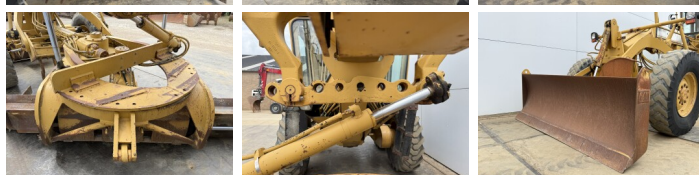
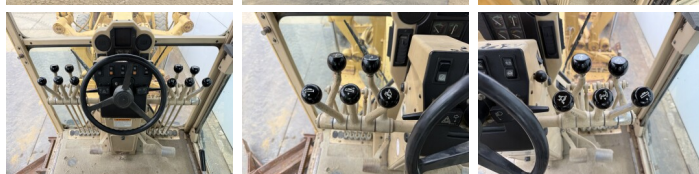
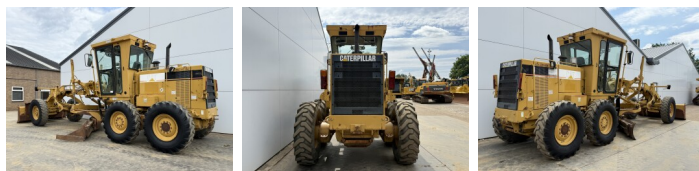
Marka silnika **Caterpillar**  
Model silnika **3116**  
Cylindry **6**  
Turbo  
Wydajno?? w kW **104**

## Banden / Rupsen

10% 10% **14.00-24**  
30% 30% **14.00-24**  
30% 30% **14.00-24**

## Opties

Radio



Dodatkowa funkcja  
hydrauliczna