

Caterpillar

# Caterpillar 120H

**BOSS**  
MACHINERY

Rok **2001**  
Numer referencyjny **BM007902**  
Godziny **19.125**

## Algemeen

Typ 120H - CE certified  
Lokalizacja Veldhoven, Netherlands  
Certificaat CE  
Available at Boss Machinery! This Caterpillar 120H - CE certified Grader from 2001 has an engine power of 104 kW and counts 19125 operational hours. The total weight of this Caterpillar 120H - CE certified is 14000 kg and the dimensions are 9.08 x 2.75 x 3.39. Furthermore, this 120H - CE certified is equipped with Radio, Dodatkowa funkcja hydrauliczna. The Caterpillar Grader also has a CE marking. Do you want more information or do you want to try the Caterpillar 120H - CE certified at our yard? Please let us know.

## Maten / Gewichten

Wymiary D\*S\*W 9.08 x 2.75 x 3.39  
Waga 14000

## Technische informatie

Konfiguracje dysków 6x4

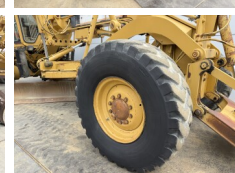
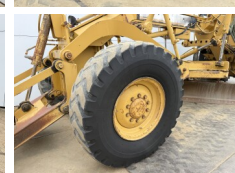
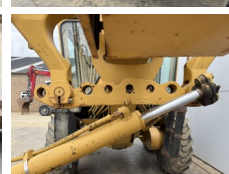
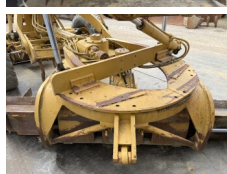
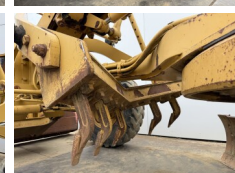
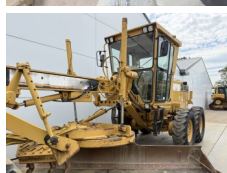
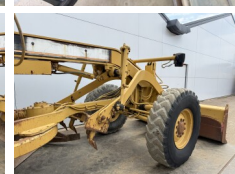
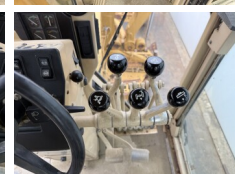
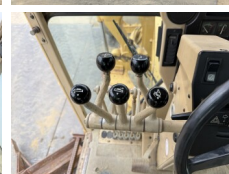
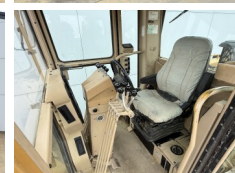
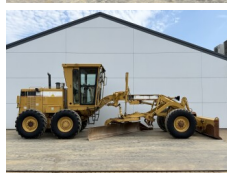
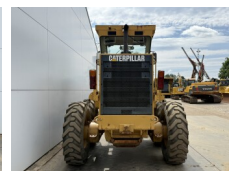
## Motor informatie

Marka silnika Caterpillar  
Model silnika 3116  
Cylindry 6  
Turbo  
Wydajno?? w kW 104

## Banden / Rupsen

10% 10% 14.00-24  
30% 30% 14.00-24  
30% 30% 14.00-24

## Opties



Radio  
Dodatkowa funkcja  
hydrauliczna