

Atlas

# Atlas Copco Boomer XE3C C30

**BOSS**  
MACHINERY

€ 125.000 wy?czynny podatek

Rok **2014**  
Numer referencyjny **BM007075**  
Godziny **3.105**

## Algemeen

Typ **Boomer XE3C C30**  
Lokalizacja **Veldhoven, Netherlands**  
Certificaat **CE**

Opis  
Available at Boss Machinery! This Atlas Boomer XE3C C30 Drill from 2014 has an engine power of 180 Diesel + 285 Electric kW and counts 3105 operational hours. The total weight of this Atlas Boomer XE3C C30 is 53000 kg and the dimensions are 16.65 x 2.75 x 3.66. Furthermore, this Boomer XE3C C30 is equipped with . The Atlas Drill also has a CE marking. Do you want more information or do you want to try the Atlas Boomer XE3C C30 at our yard? Please let us know.

## Maten / Gewichten

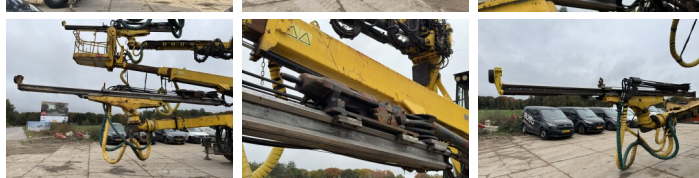
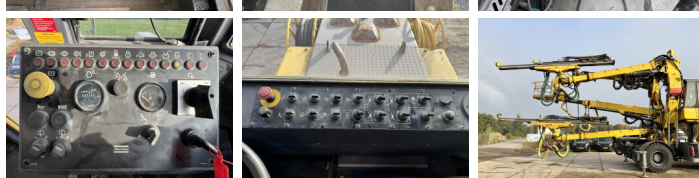
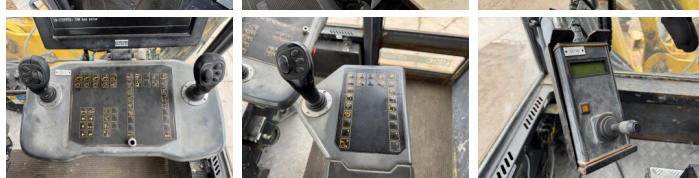
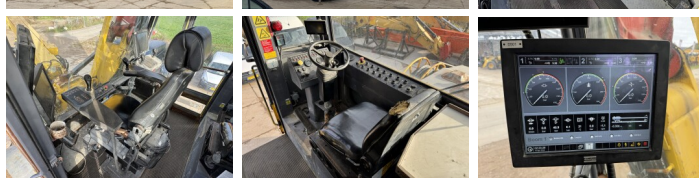
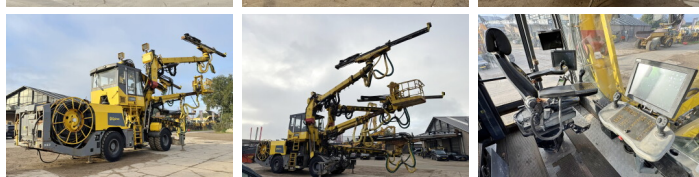
Waga **53000**  
Wymiary D\*S\*W **16.65 x 2.75 x 3.66**

## Technische informatie

Hertz **50**  
Voltage **1000**  
Ampere **288**  
KVA **27**  
Konfiguracje dysków **4x4**

## Motor informatie

Marka silnika **Deutz**  
Model silnika **TCD 2013 L06 2V**  
Cylindry **6**  
Turbo  
Wyda?no?? w kW **180 Diesel + 285 Electric**



## Banden / Rupsen

---

70% 70% 70% 70%      14.00R24 Michelin  
70% 70%                14.00R24 Michelin