

Hitachi

# Hitachi KH150 GLS-2 - 30.3m Drill

€ 125.000 wy?czny podatek

Rok **1977**  
Numer referencyjny **BM006411**  
Godziny **5.453**

## Algemeen

Typ **KH150 GLS-2 - 30.3m Drill**  
Lokalizacja **Veldhoven, Netherlands**  
Dutch vehicle  
Certificaat **CE**

Opis  
Available at Boss Machinery! This Hitachi KH150 GLS-2 - 30.3m Drill from 1977 has an engine power of - kW and counts 5453 operational hours. Always worked in The Netherlands. The total weight of this Hitachi KH150 GLS-2 - 30.3m Drill is - kg and the dimensions are 9.50 x 3.42 x 3.47. Furthermore, this KH150 GLS-2 - 30.3m Drill is equipped with Centralne smarowanie. The Hitachi Drill also has a CE marking. Do you want more information or do you want to try the Hitachi KH150 GLS-2 - 30.3m Drill at our yard? Please let us know.

## Maten / Gewichten

Wymiary D\*S\*W **9.50 x 3.42 x 3.47**

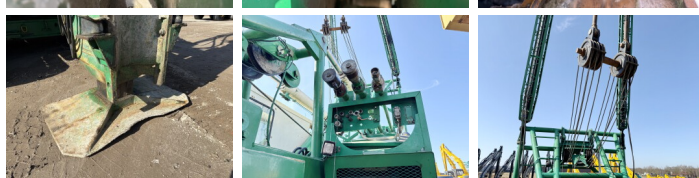
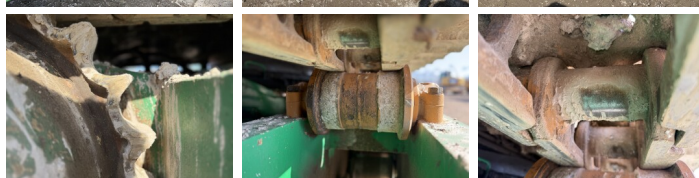
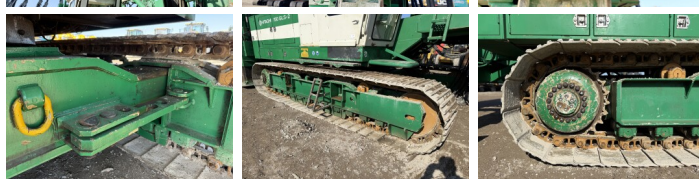
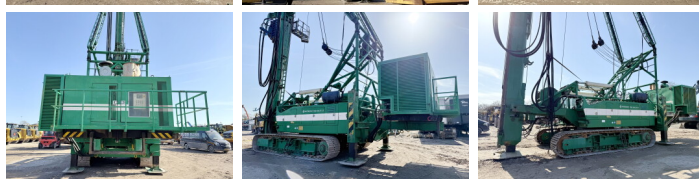
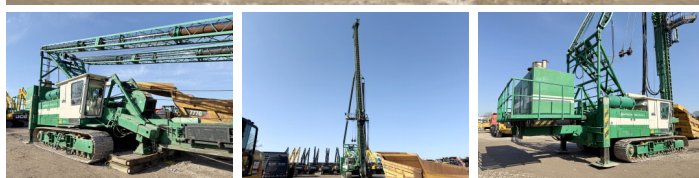
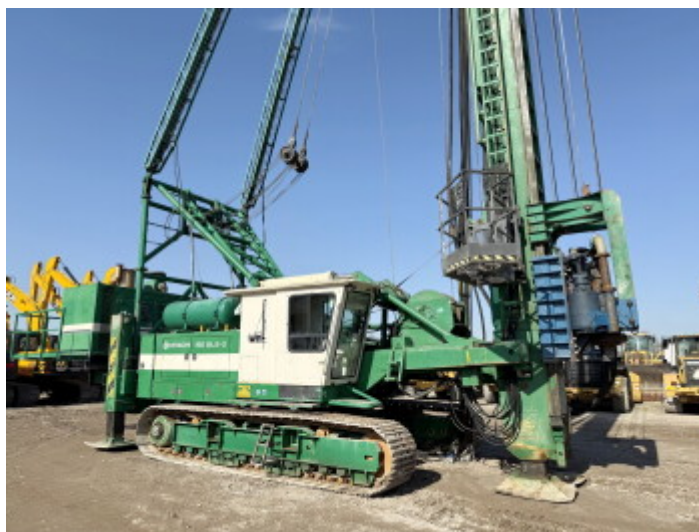
## Motor informatie

Marka silnika **Cummins NTA 855 (Powerpack)**  
Model silnika **DAF 1160 (Machine)**  
Turbo

## Banden / Rupsen

P?yta % **30**  
Sprocket% **80**  
?a?cuch% **80**  
Szeroko?? p?yty **77 cm**

**BOSS**  
MACHINERY



# Opties

---

Centrales smarowanie