

Hyundai

Hyundai R340L Smart

BOSS
MACHINERY

€ 113.950escl.

Anno **2026**
Numero di riferimento **BM006847**
Ore **5**

Algemeen

Genere R340L Smart
Posizione Veldhoven, Netherlands
Certificaat NOT FOR SALE IN EU / NO CE MARK
Available at Boss Machinery! This used Hyundai R340L Smart Excavators from 2026 has an engine power of 206 kW and counts 5 operational hours. The total weight of this Hyundai R340L Smart is 33800 kg and the dimensions are 11.45 x 3.30 x 3.55. Furthermore, this R340L Smart is equipped with Aria condizionata, Funzione idraulica supplementare, Funzione del martello. The Hyundai Excavators also has a NOT FOR SALE IN EU / NO CE MARK marking. Do you want more information or do you want to try the Hyundai R340L Smart at our yard? Please let us know.

Maten / Gewichten

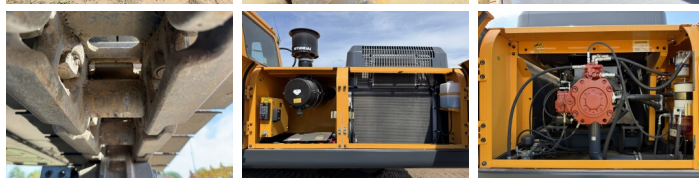
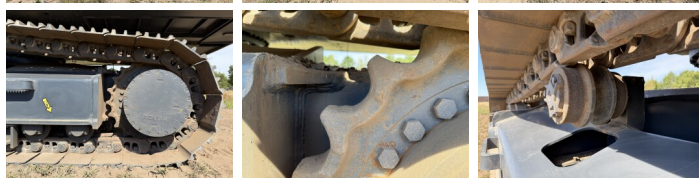
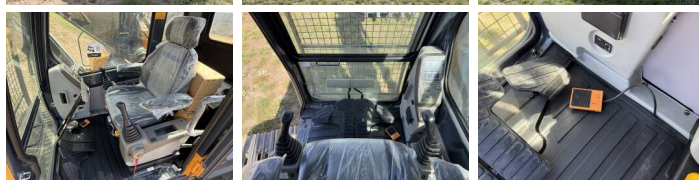
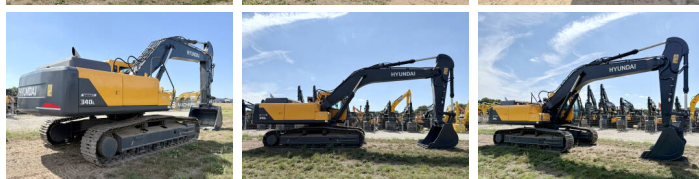
Dimensioni L*L*A 11.45 x 3.30 x 3.55
Peso 33800

Technische informatie

Bucket Range cu.m: 1.44- 2.1
Maximum Digging Depth: 6820 mm
Swing Speed: 9.5 rpm

Motor informatie

Marchio del motore Hyundai
?????????? ?????? D6AC-C1
Cilindri 6
Turbo
Capacità in kW 206



Banden / Rupsen

Piatto %	100
Pignone%	100
Catena%	100
Larghezza del piatto	60 cm

Opties

Aria condizionata
Funzione idraulica
supplementare
Funzione del martello