

Magni

Magni RTH5.21

BOSS
MACHINERY

€ 59.500escl.

Anno **2014**
Numero di riferimento **BM006915**
Ore **3.965**

Algemeen

Genere **RTH5.21**
Posizione **Veldhoven, Netherlands**
Certificaat **CE**

Descrizione

Available at Boss Machinery! This Magni RTH5.21 Telescopic handlers from 2014 has an engine power of 95 kW and counts 3965 operational hours. The total weight of this Magni RTH5.21 is 16500 kg and the dimensions are 8.80 x 2.38 x 3.07. Furthermore, this RTH5.21 is equipped with Radio, Air Suspension Seat, Attacco rapido, Aria condizionata, Funzione idraulica supplementare. The Magni Telescopic handlers also has a CE marking. Do you want more information or do you want to try the Magni RTH5.21 at our yard? Please let us know.

Maten / Gewichten

Dimensioni L*L*A **8.80 x 2.38 x 3.07**
Peso **16500**

Technische informatie

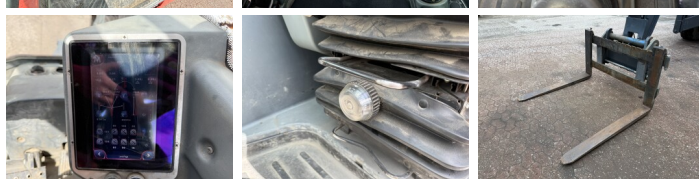
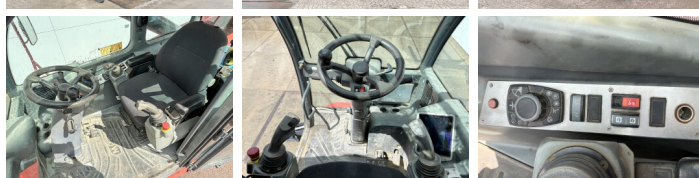
Guidare le configurazioni **4x4 (4 Wheel Steering / Crab Mode)**

Motor informatie

Marchio del motore **Mercedes-Benz**
?????????? ???? **OM 924 LA**
Cilindri **4**
Turbo
Capacità in kW **95**

Banden / Rupsen

20% 20% **445/65R22.5**



20% 20%

445/65R22.5

Opties

Radio

Air Suspension Seat

Attacco rapido

Aria condizionata

Funzione idraulica
supplementare