

Hitachi

Hitachi KH150 GLS-2 - 30.3m Drill

€ 125.000escl.

Anno 1977
Numero di riferimento BM006411
Ore 5.453

Algemeen

Genere KH150 GLS-2 - 30.3m Drill
Posizione Veldhoven, Netherlands
Dutch vehicle
Certificaat CE

Descrizione Available at Boss Machinery! This Hitachi KH150 GLS-2 - 30.3m Drill from 1977 has an engine power of - kW and counts 5453 operational hours. Always worked in The Netherlands. The total weight of this Hitachi KH150 GLS-2 - 30.3m Drill is - kg and the dimensions are 9.50 x 3.42 x 3.47. Furthermore, this KH150 GLS-2 - 30.3m Drill is equipped with Ingrassaggio centralizzato. The Hitachi Drill also has a CE marking. Do you want more information or do you want to try the Hitachi KH150 GLS-2 - 30.3m Drill at our yard? Please let us know.

Maten / Gewichten

Dimensioni L*L*A 9.50 x 3.42 x 3.47

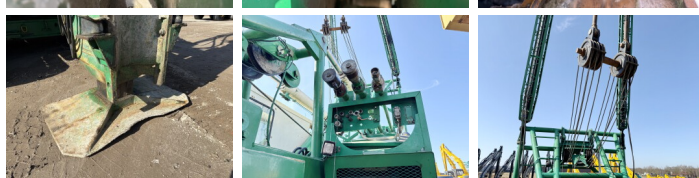
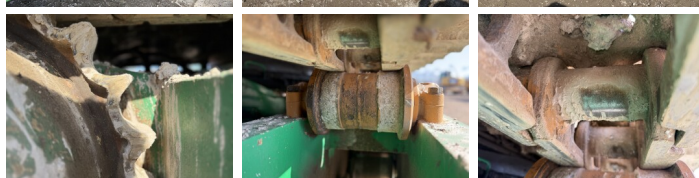
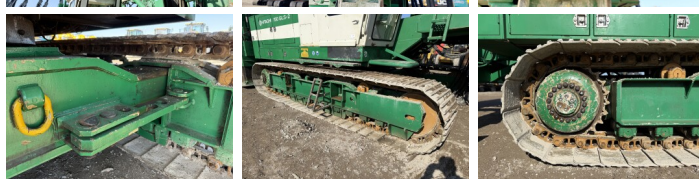
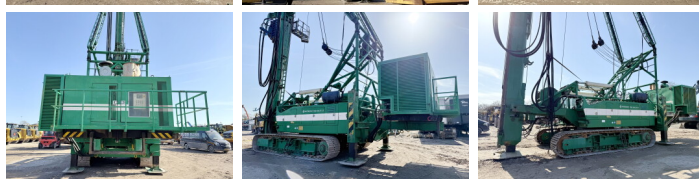
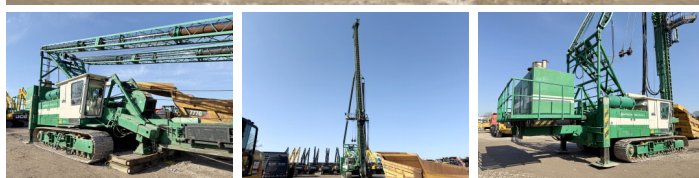
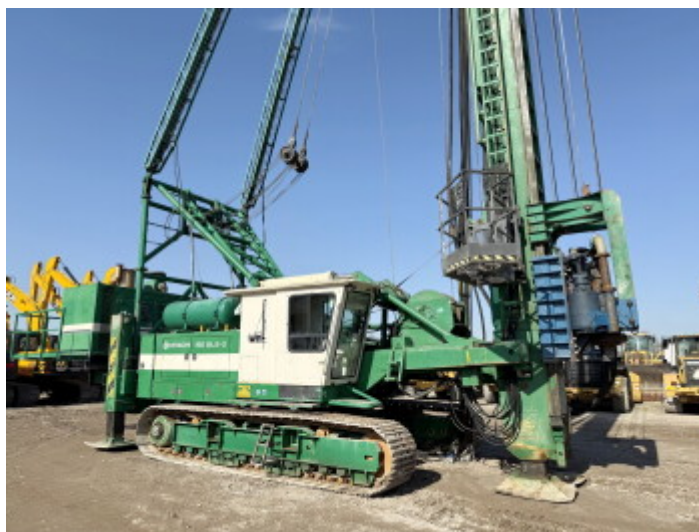
Motor informatie

Marchio del motore Cummins NTA 855 (Powerpack)
?????????? ?????? DAF 1160 (Machine)
Turbo

Banden / Rupsen

Piatto % 30
Pignone% 80
Catena% 80
Larghezza del piatto 77 cm

BOSS
MACHINERY



Opties

Ingrassaggio centralizzato