

Hitachi

Hitachi KH150 GLS-2 - 30.3m Drill

€ 125.000xkluzív

Év **1977**
Referencia szám **BM006411**
Óra **5.453**

Algemeen

Típus KH150 GLS-2 - 30.3m Drill
Hely Veldhoven, Netherlands
Dutch vehicle
Certificaat CE

Leírás Available at Boss Machinery! This Hitachi KH150 GLS-2 - 30.3m Drill from 1977 has an engine power of - kW and counts 5453 operational hours. Always worked in The Netherlands. The total weight of this Hitachi KH150 GLS-2 - 30.3m Drill is - kg and the dimensions are 9.50 x 3.42 x 3.47. Furthermore, this KH150 GLS-2 - 30.3m Drill is equipped with Központi zsírzás. The Hitachi Drill also has a CE marking. Do you want more information or do you want to try the Hitachi KH150 GLS-2 - 30.3m Drill at our yard? Please let us know.

Maten / Gewichten

Méretek H*S*M 9.50 x 3.42 x 3.47

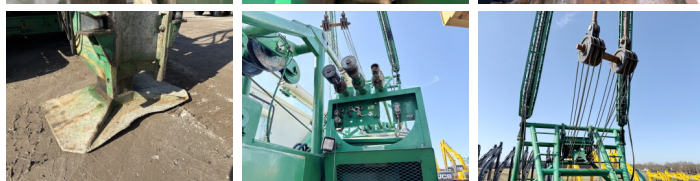
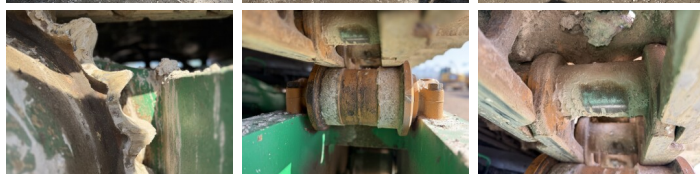
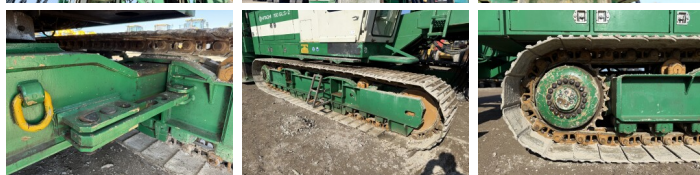
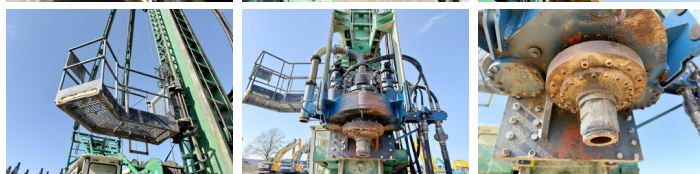
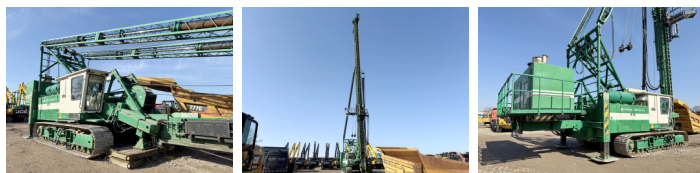
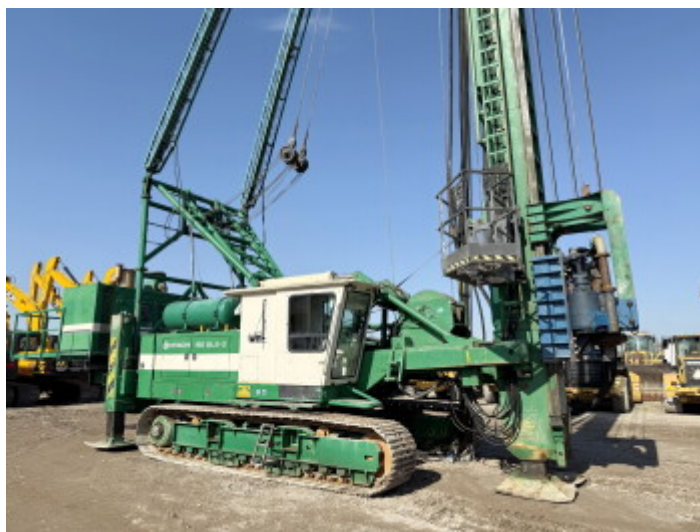
Motor informatie

A motor márkája Cummins NTA 855 (Powerpack)
A motor modellje DAF 1160 (Machine)
Turbo

Banden / Rupsen

Lemez % 30
Lánckerék% 80
Lánc% 80
Lemez szélessége 77 cm

BOSS
MACHINERY



Opties

Központi zsírzás