

Caterpillar

Caterpillar 980 - Next Gen

BOSS
MACHINERY

Annee de construction **2022**
Numero de reference **BM007827**
Heures **10.793**

Algemeen

Type 980 - Next Gen
Emplacement Veldhoven, Netherlands
Certificaat CE

Description

Available at Boss Machinery! This Caterpillar 980 - Next Gen Wheel Loader from 2022 has an engine power of 313 kW and counts 10793 operational hours. The total weight of this Caterpillar 980 - Next Gen is 29500 kg and the dimensions are 9.90 x 3.46 x 3.81. Furthermore, this 980 - Next Gen is equipped with Camera, Heated Seat, Bluetooth, CDC Steering, Climate Control, climatiseur, Radio, Graissage centralisé. The Caterpillar Wheel Loader also has a CE marking. Do you want more information or do you want to try the Caterpillar 980 - Next Gen at our yard? Please let us know.

Maten / Gewichten

Dimensions L*L*H 9.90 x 3.46 x 3.81
Poids 29500

Technische informatie

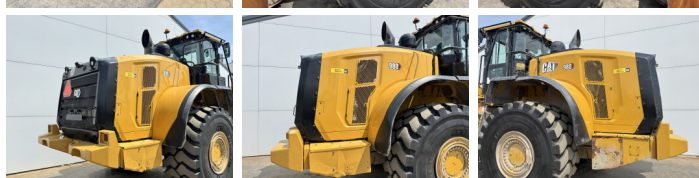
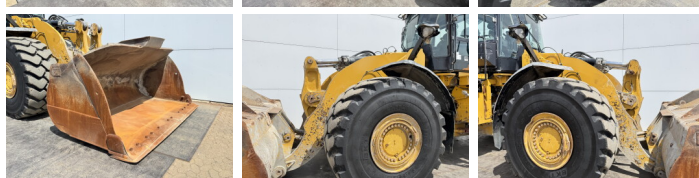
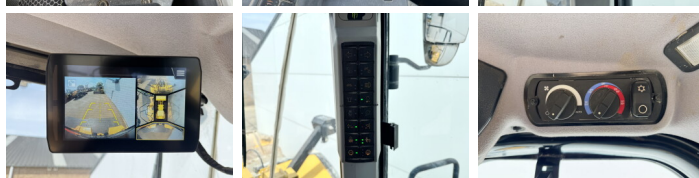
Configurations de lecteur 4x4

Motor informatie

Moteur marque Caterpillar
Moteur type C13
Cylindres 6
Turbo
Puissance dans kW 313

Banden / Rupsen

70% 70% 29.5R25



70% 70%

29.5R25

Opties

Camera

Heated Seat

Bluetooth

CDC Steering

Climate Control

climatiseur

Radio

Graissage centralisé