

Mecalac

Mecalac MCL6

BOSS
MACHINERY

€ 39.500excl.

Annee de construction **2023**
Numero de reference **BM007521**
Heures **5**

Algemeen

Type MCL6
Emplacement Veldhoven, Netherlands
Certificaat CE

Description Available at Boss Machinery! This Mecalac MCL6 Wheel Loader from 2023 has an engine power of 36 kW and counts 5 operational hours. The total weight of this Mecalac MCL6 is 3300 kg and the dimensions are 3.50 x 1.10 x 1.29 . Furthermore, this MCL6 is equipped with Attache rapide pour godet. The Mecalac Wheel Loader also has a CE marking. Do you want more information or do you want to try the Mecalac MCL6 at our yard? Please let us know.

Maten / Gewichten

Dimensions L*L*H 3.50 x 1.10 x 1.29
Poids 3300

Technische informatie

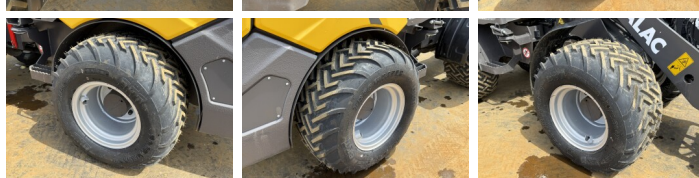
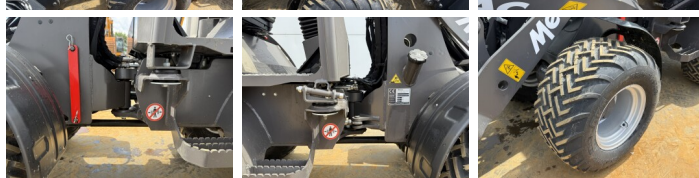
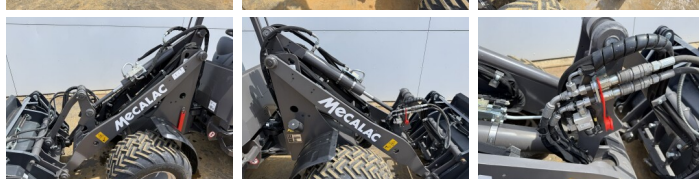
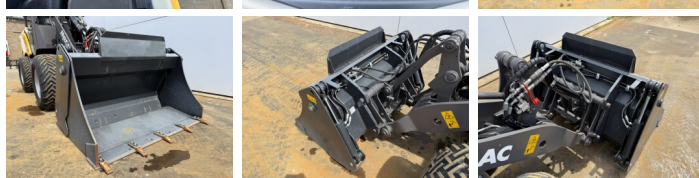
German Machine
Configurations de lecteur 4x4

Motor informatie

Moteur marque Perkins
Moteur type TCD 1.7 L3
Cylindres 3
Turbo
Puissance dans kW 36

Banden / Rupsen

100% 100% 31x15.50-15
100% 100% 31x15.50-15



Opties

Attache rapide pour godet