

Volvo

Volvo EC250DL

BOSS
MACHINERY

Annee de construction **2013**
Numero de reference **BM007770**
Heures **102.634**

Algemeen

Type **EC250DL**
Emplacement **Veldhoven, Netherlands**
Certificaat **CE**

Description

Available at Boss Machinery! This Volvo EC250DL Excavators from 2013 has an engine power of 152 kW and counts 102634 operational hours. The total weight of this Volvo EC250DL is 27400 kg and the dimensions are 10.50 x 3.38 x 3.01. Furthermore, this EC250DL is equipped with Attache rapide pour godet, Radio, Camera, Fonction de marteau, Graissage centralisé. The Volvo Excavators also has a CE marking. Do you want more information or do you want to try the Volvo EC250DL at our yard? Please let us know.

Maten / Gewichten

Dimensions L*L*H **10.50 x 3.38 x 3.01**
Poids **27400**

Technische informatie

German Machine

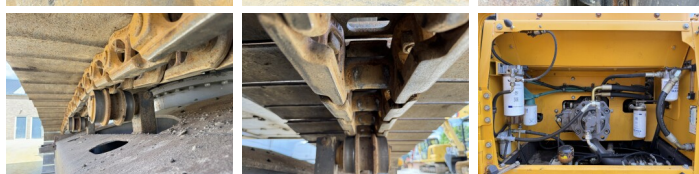
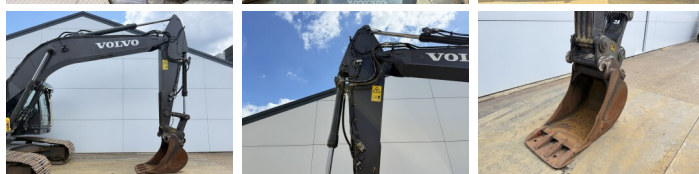
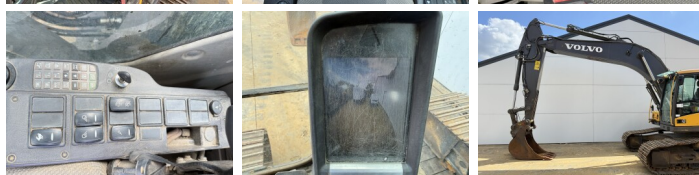
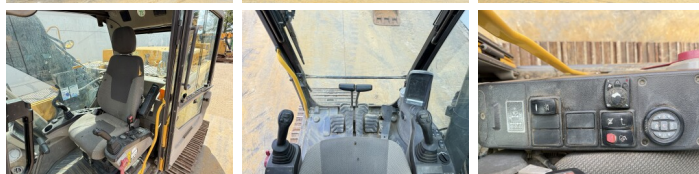
Motor informatie

Moteur marque **Volvo**
Moteur type **D8H**
Cylindres **6**
Puissance dans kW **152**

Banden / Rupsen

Plate % **80**
Sprocket % **80**
Chain % **80**
Largeur de la plaque **80 cm**

Opties



Attache rapide pour godet

Radio

Camera

Fonction de marteau

Graissage centralisé