

Hyundai

# Hyundai R215L Smart X Plus \*2026 Model\*

€ 69.500excl.

Annee de construction **2026**  
Numero de reference **BM007548**  
Heures **5**

## Algemeen

Type R215L Smart X Plus \*2026 Model\*

Emplacement Veldhoven, Netherlands

Description Available at Boss Machinery! This Hyundai R215L Smart X Plus \*2026 Model\* Excavators from 2026 has an engine power of 148 kW and counts 5 operational hours. The total weight of this Hyundai R215L Smart X Plus \*2026 Model\* is 22200 kg and the dimensions are 9.51 x 3.00 x 3.33. Furthermore, this R215L Smart X Plus \*2026 Model\* is equipped with Radio, Fonction hydraulique supplémentaire, Fonction de marteau. Do you want more information or do you want to try the Hyundai R215L Smart X Plus \*2026 Model\* at our yard? Please let us know.

## Maten / Gewichten

Dimensions L\*L\*H 9.51 x 3.00 x 3.33  
Poids 22200

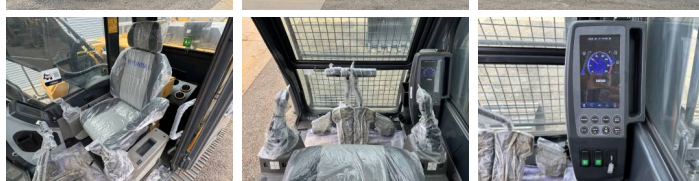
## Motor informatie

Moteur marque Cummins  
Moteur type 6BTAA 5.9 148C  
Cylindres 6  
Turbo  
Puissance dans kW 148

## Banden / Rupsen

Plate % 100  
Sprocket % 100  
Chain % 100  
Largeur de la plaque 60 cm

**BOSS**  
MACHINERY



## Opties

---

Radio

Fonction hydraulique  
supplémentaire

Fonction de marteau