

Hyundai

Hyundai R215L Smart X Plus *2026 Model*

€ 69.500excl.

Annee de construction **2026**
Numero de reference **BM007548**
Heures **5**

Algemeen

Type R215L Smart X Plus *2026 Model*

Emplacement Veldhoven, Netherlands

Description Available at Boss Machinery! This Hyundai R215L Smart X Plus *2026 Model* Excavators from 2026 has an engine power of 148 kW and counts 5 operational hours. The total weight of this Hyundai R215L Smart X Plus *2026 Model* is 22200 kg and the dimensions are 9.51 x 3.00 x 3.33. Furthermore, this R215L Smart X Plus *2026 Model* is equipped with Radio, Fonction hydraulique supplémentaire, Fonction de marteau. Do you want more information or do you want to try the Hyundai R215L Smart X Plus *2026 Model* at our yard? Please let us know.

Maten / Gewichten

Poids 22200
Dimensions L*L*H 9.51 x 3.00 x 3.33

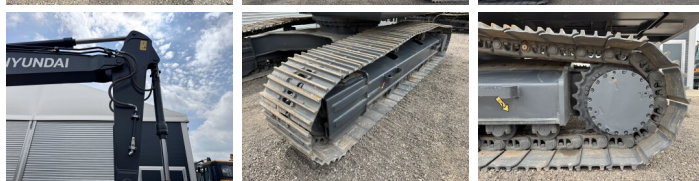
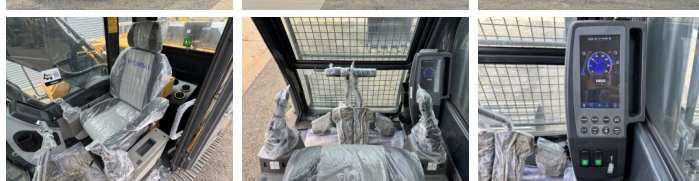
Motor informatie

Moteur marque Cummins
Moteur type 6BTAA 5.9 148C
Cylindres 6
Turbo
Puissance dans kW 148

Banden / Rupsen

Sprocket % 100
Chain % 100
Plate % 100
Largeur de la plaque 60 cm

BOSS
MACHINERY



Opties

Radio

Fonction hydraulique
supplémentaire

Fonction de marteau