

Caterpillar

Caterpillar 321 05A - Next Gen

€ 74.500excl.

Annee de construction **2026**
Numero de reference **BM007409**
Heures **5**

Algemeen

Type 321 05A - Next Gen
Emplacement Veldhoven, Netherlands
NON CE

Overig NOT FOR SALE IN EU /
NO CE MARK

Description

Available at Boss Machinery! This Caterpillar 321 05A - Next Gen Excavators from 2026 has an engine power of 100 kW and counts 5 operational hours. The total weight of this Caterpillar 321 05A - Next Gen is 19800 kg and the dimensions are 9.57 x 2.81 x 2.94. Furthermore, this 321 05A - Next Gen is equipped with climatiseur, Bluetooth, Climate Control, Radio, Heated Cab, Fonction hydraulique supplémentaire, Fonction de marteau. Do you want more information or do you want to try the Caterpillar 321 05A - Next Gen at our yard? Please let us know.

Maten / Gewichten

Poids 19800
Dimensions L*L*H 9.57 x 2.81 x 2.94

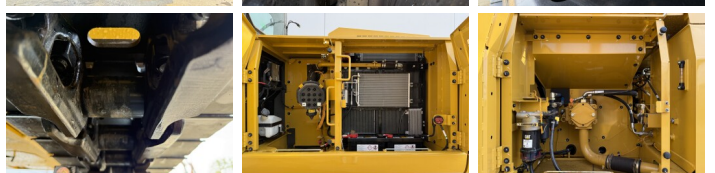
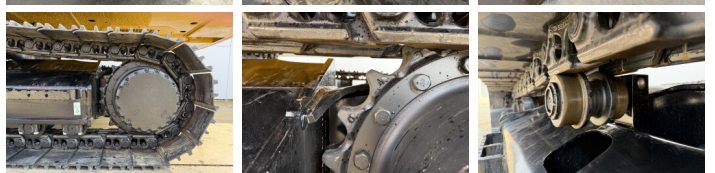
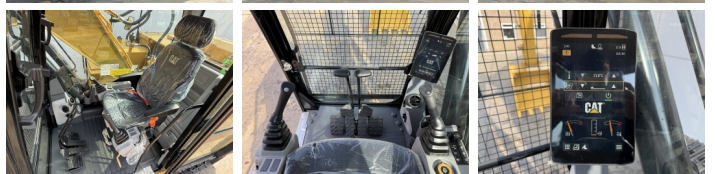
Motor informatie

Moteur marque Caterpillar
Moteur type C3.6
Cylindres 4
Turbo
Puissance dans kW 100

Banden / Rupsen

Chain % 100
Plate % 100

BOSS
MACHINERY



Sprocket %	100
Largeur de la plaque	60 cm

Opties

climatiseur

Bluetooth

Climate Control

Radio

Heated Cab

Fonction hydraulique
supplémentaire

Fonction de marteau