

Hyundai

# Hyundai R340L Smart

**BOSS**  
MACHINERY

€ 113.950excl.

Annee de construction **2026**  
Numero de reference **BM006847**  
Heures **5**

## Algemeen

Type R340L Smart  
Emplacement Veldhoven, Netherlands  
Certificaat NOT FOR SALE IN EU / NO CE MARK  
Available at Boss Machinery! This used Hyundai R340L Smart Excavators from 2026 has an engine power of 206 kW and counts 5 operational hours. The total weight of this Hyundai R340L Smart is 33800 kg and the dimensions are 11.45 x 3.30 x 3.55.

Description Furthermore, this R340L Smart is equipped with climatiseur, Fonction hydraulique supplémentaire, Fonction de marteau. The Hyundai Excavators also has a NOT FOR SALE IN EU / NO CE MARK marking. Do you want more information or do you want to try the Hyundai R340L Smart at our yard? Please let us know.

## Maten / Gewichten

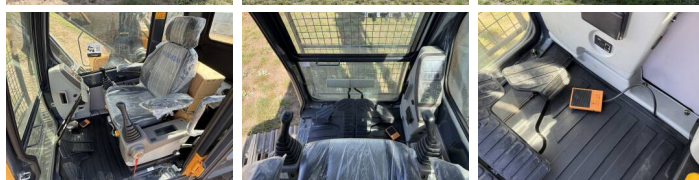
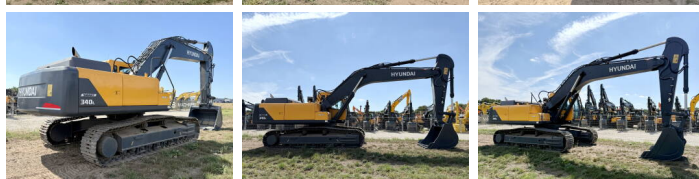
Dimensions L\*L\*H 11.45 x 3.30 x 3.55  
Poids 33800

## Technische informatie

Bucket Range cu.m: 1.44- 2.1  
Maximum Digging Depth: 6820 mm  
Swing Speed: 9.5 rpm

## Motor informatie

Moteur marque Hyundai  
Moteur type D6AC-C1  
Cylindres 6  
Turbo  
Puissance dans kW 206



## **Banden / Rupsen**

---

Plate %	100
Sprocket %	100
Chain %	100
Largeur de la plaque	60 cm

## **Opties**

---

climatiseur

Fonction hydraulique  
supplémentaire

Fonction de marteau