

Magni

Magni RTH5.21

BOSS
MACHINERY

€ 59.500excl.

Annee de construction **2014**
Numero de reference **BM006915**
Heures **3.965**

Algemeen

Type RTH5.21
Emplacement Veldhoven, Netherlands
Certificaat CE

Description

Available at Boss Machinery! This Magni RTH5.21 Telescopic handlers from 2014 has an engine power of 95 kW and counts 3965 operational hours. The total weight of this Magni RTH5.21 is 16500 kg and the dimensions are 8.80 x 2.38 x 3.07. Furthermore, this RTH5.21 is equipped with climatiseur, Radio, Air Suspension Seat, Attache rapide pour godet, Fonction hydraulique supplémentaire. The Magni Telescopic handlers also has a CE marking. Do you want more information or do you want to try the Magni RTH5.21 at our yard? Please let us know.

Maten / Gewichten

Poids 16500
Dimensions L*L*H 8.80 x 2.38 x 3.07

Technische informatie

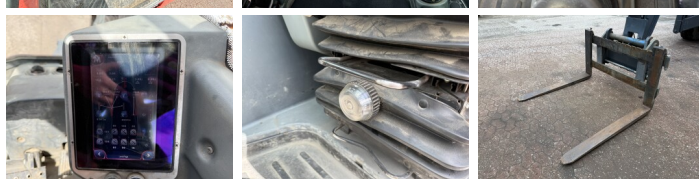
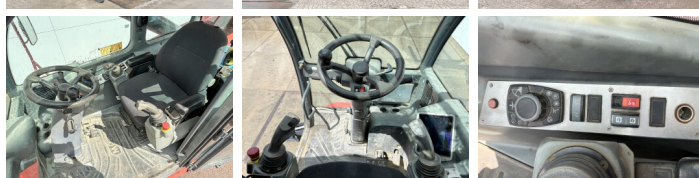
Configurations de lecteur 4x4 (4 Wheel Steering / Crab Mode)

Motor informatie

Moteur marque Mercedes-Benz
Moteur type OM 924 LA
Cylindres 4
Turbo
Puissance dans kW 95

Banden / Rupsen

20% 20% 445/65R22.5



Opties

climatiseur

Radio

Air Suspension Seat

Attache rapide pour godet

Fonction hydraulique
supplémentaire