

Liebherr

Liebherr A900B Litronic

BOSS
MACHINERY

Annee de construction **2000**
Numero de reference **BM007434**
Heures **16.283**

Algemeen

Type A900B Litronic
Emplacement Veldhoven, Netherlands
Certificaat CE

Description

Available at Boss Machinery! This Liebherr A900B Litronic Wheeled Excavator from 2000 has an engine power of 82 kW and counts 16283 operational hours. The total weight of this Liebherr A900B Litronic is 17000 kg and the dimensions are 7.98 x 2.51 x 3.13. Furthermore, this A900B Litronic is equipped with Attache rapide pour godet, Fonction hydraulique supplémentaire, Fonction de marteau, Graissage centralisé. The Liebherr Wheeled Excavator also has a CE marking. Do you want more information or do you want to try the Liebherr A900B Litronic at our yard? Please let us know.

Maten / Gewichten

Dimensions L*L*H 7.98 x 2.51 x 3.13
Poids 17000

Technische informatie

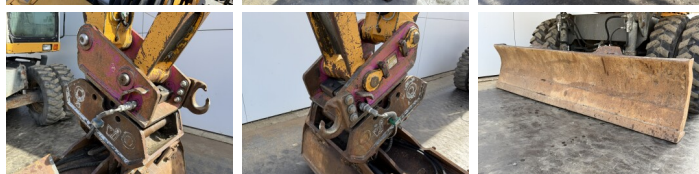
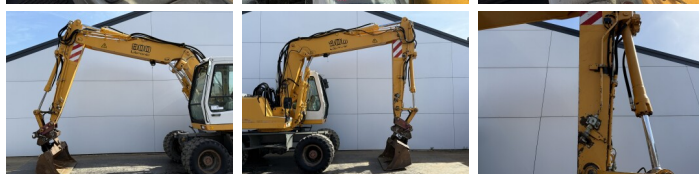
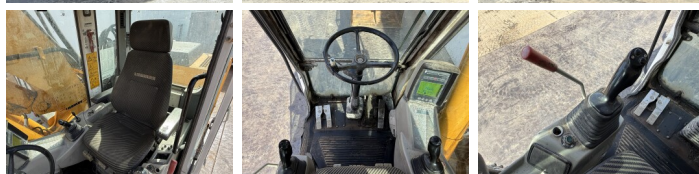
Configurations de lecteur 4x4

Motor informatie

Moteur marque Deutz
Moteur type BF4M1013E
Cylindres 4
Turbo
Puissance dans kW 82

Banden / Rupsen

30% 30% 10.00-20
40% 30% 10.00-20



Opties

Attache rapide pour godet

Fonction hydraulique
supplémentaire

Fonction de marteau

Graissage centralisé