

Caterpillar

Caterpillar 120H

BOSS
MACHINERY

Annee de construction **2001**
Numero de reference **BM007902**
Heures **19.125**

Algemeen

Type 120H
Emplacement Veldhoven, Netherlands
Certificaat CE

Available at Boss Machinery! This Caterpillar 120H Grader from 2001 has an engine power of 104 kW and counts 19125 operational hours. The total weight of this Caterpillar 120H is 14000 kg and the dimensions are 9.08 x 2.75 x 3.39. Furthermore, this 120H is equipped with Radio, Fonction hydraulique supplémentaire. The Caterpillar Grader also has a CE marking. Do you want more information or do you want to try the Caterpillar 120H at our yard? Please let us know.

Maten / Gewichten

Poids 14000
Dimensions L*L*H 9.08 x 2.75 x 3.39

Technische informatie

Configurations de lecteur 6x4

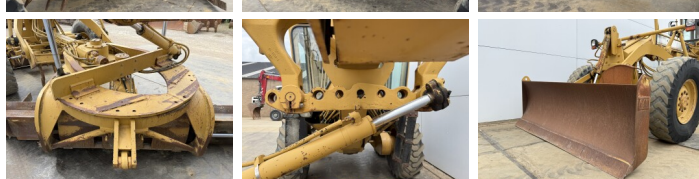
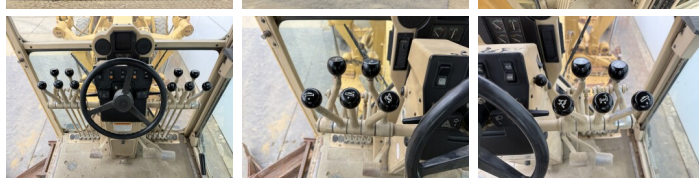
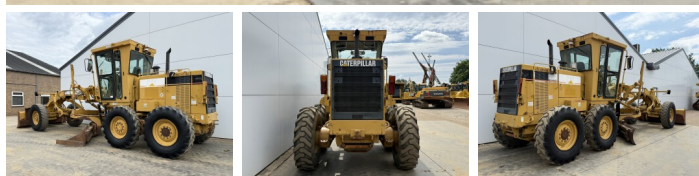
Motor informatie

Moteur marque Caterpillar
Moteur type 3116
Cylindres 6
Turbo
Puissance dans kW 104

Banden / Rupsen

10% 10% 14.00-24
30% 30% 14.00-24
30% 30% 14.00-24

Opties



Radio
Fonction hydraulique
supplémentaire