

Hitachi

Hitachi KH150 GLS-2 - 30.3m Drill

€ 125.000excl.

Annee de construction **1977**
Numero de reference **BM006411**
Heures **5.453**

Algemeen

Type KH150 GLS-2 - 30.3m Drill
Emplacement Veldhoven, Netherlands
Dutch vehicle
Certificaat CE

Description

Available at Boss Machinery! This Hitachi KH150 GLS-2 - 30.3m Drill from 1977 has an engine power of - kW and counts 5453 operational hours. Always worked in The Netherlands. The total weight of this Hitachi KH150 GLS-2 - 30.3m Drill is - kg and the dimensions are 9.50 x 3.42 x 3.47. Furthermore, this KH150 GLS-2 - 30.3m Drill is equipped with Graissage centralisé. The Hitachi Drill also has a CE marking. Do you want more information or do you want to try the Hitachi KH150 GLS-2 - 30.3m Drill at our yard? Please let us know.

Maten / Gewichten

Dimensions L*L*H 9.50 x 3.42 x 3.47

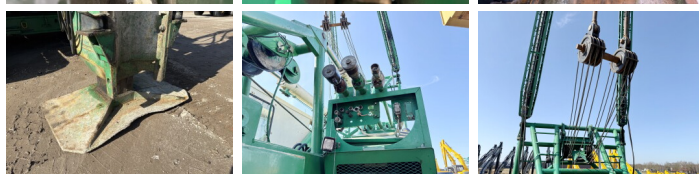
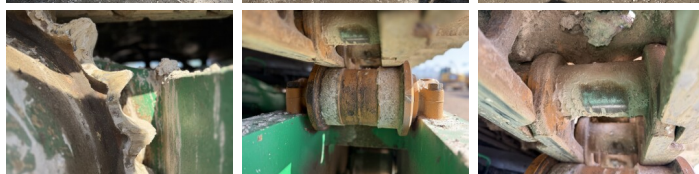
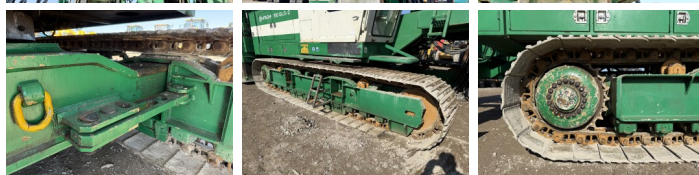
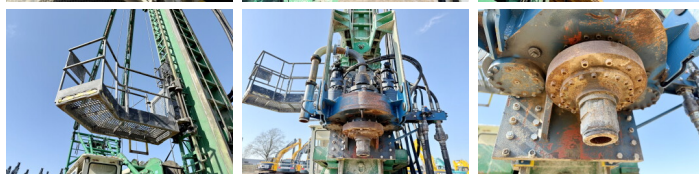
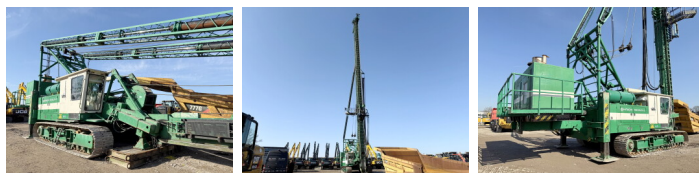
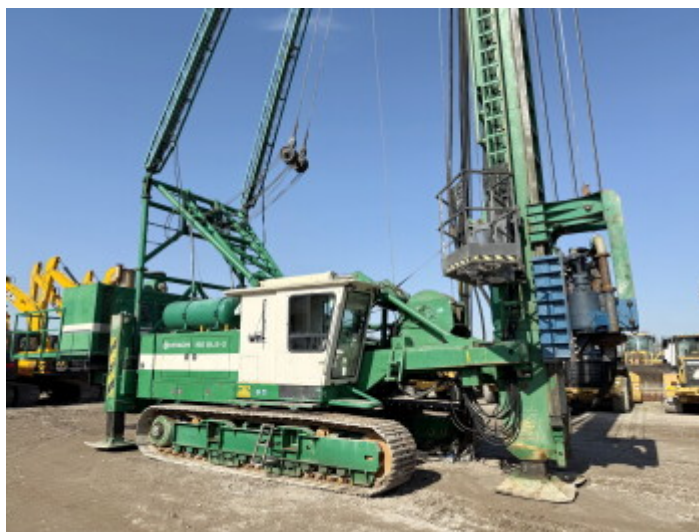
Motor informatie

Moteur marque Cummins NTA 855 (Powerpack)
Moteur type DAF 1160 (Machine)
Turbo

Banden / Rupsen

Plate % 30
Sprocket % 80
Chain % 80
Largeur de la plaque 77 cm

BOSS
MACHINERY



Opties

Graissage centralisé