

Epiroc

# Epiroc ME5 Shotcrete

**BOSS**  
MACHINERY

Annee de construction **2018**  
Numero de reference **BM007077**  
Heures **3.105**

## Algemeen

Type ME5 Shotcrete  
Emplacement Veldhoven, Netherlands  
Certificaat CE  
Available at Boss Machinery! This Epiroc ME5 Shotcrete Concrete pump from 2018 has an engine power of Diesel: 74kw - Electric: 130kw kW and counts 3105 operational hours. The total weight of this Epiroc ME5 Shotcrete is 19255 kg and the dimensions are 11.65 x 2.27 x 3.32 . Furthermore, this ME5 Shotcrete is equipped with Graissage centralisé. The Epiroc Concrete pump also has a CE marking. Do you want more information or do you want to try the Epiroc ME5 Shotcrete at our yard? Please let us know.

## Maten / Gewichten

Dimensions L\*L\*H 11.65 x 2.27 x 3.32  
Poids 19255

## Technische informatie

Configurations de lecteur 4x4x4 (4 Wheel Steering)

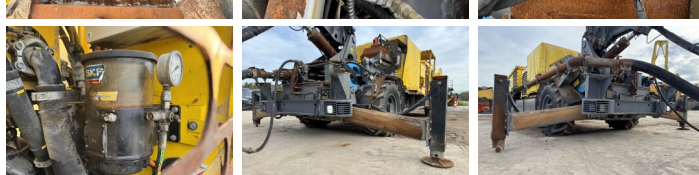
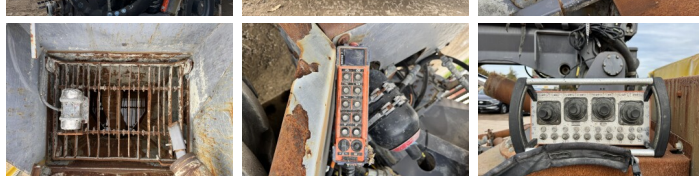
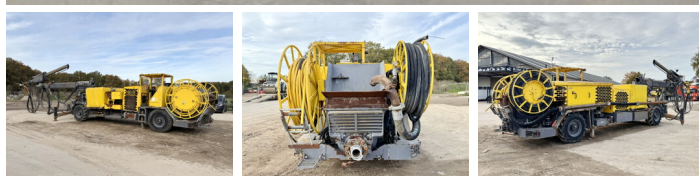
## Motor informatie

Moteur marque Deutz  
Moteur type TCD 3.6  
Cylindres 4  
Turbo  
Puissance dans kW Diesel: 74kw - Electric: 130kw

## Banden / Rupsen

70% 70% 405/70-20  
70% 70% 405/70-20

## Opties



Graissage centralisé