

Mecalac

Mecalac MCL6

BOSS
MACHINERY

€ 39.500excl.

Year **2023**
Reference number **BM007521**
Hours **5**

Algemeen

Type **MCL6**
Location **Veldhoven, Netherlands**
Certificaat **CE**

Description
Available at Boss Machinery! This Mecalac MCL6 Wheel Loader from 2023 has an engine power of 36 kW and counts 5 operational hours. The total weight of this Mecalac MCL6 is 3300 kg and the dimensions are 3.50 x 1.10 x 1.29 . Furthermore, this MCL6 is equipped with Quick coupler. The Mecalac Wheel Loader also has a CE marking. Do you want more information or do you want to try the Mecalac MCL6 at our yard? Please let us know.

Maten / Gewichten

L*W*H: **3.50 x 1.10 x 1.29**
Weight: **3300**

Technische informatie

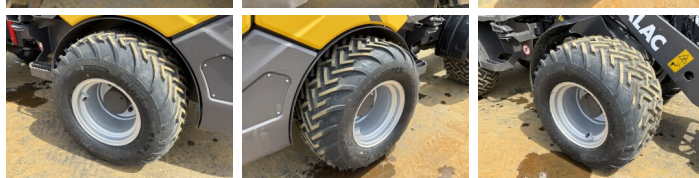
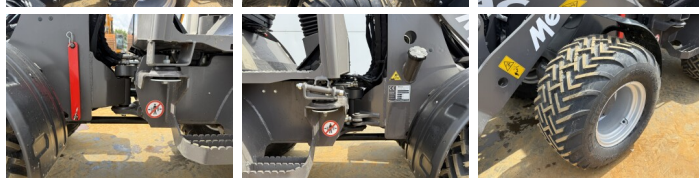
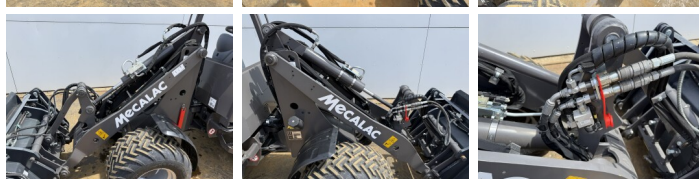
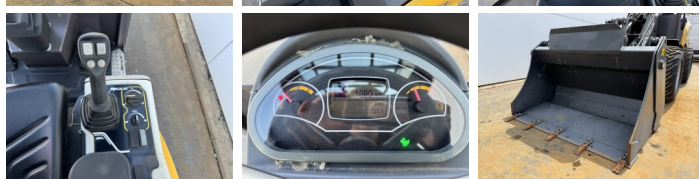
German Machine
Drive configurations **4x4**

Motor informatie

Engine brand: **Perkins**
Engine model: **TCD 1.7 L3**
Cylinders: **3**
Turbo
Capacity in kW: **36**

Banden / Rupsen

100% 100% **31x15.50-15**
100% 100% **31x15.50-15**



Optics

Quick coupler