

Mecalac

# Mecalac MCL6

**BOSS**  
MACHINERY

€ 39.500excl.

Year **2023**  
Reference number **BM007521**  
Hours **5**

## Algemeen

Type **MCL6**  
Location **Veldhoven, Netherlands**  
Certificaat **CE**

Description Available at Boss Machinery! This Mecalac MCL6 Wheel Loader from 2023 has an engine power of 36 kW and counts 5 operational hours. The total weight of this Mecalac MCL6 is 3300 kg and the dimensions are 3.50 x 1.10 x 1.29 . Furthermore, this MCL6 is equipped with Quick coupler. The Mecalac Wheel Loader also has a CE marking. Do you want more information or do you want to try the Mecalac MCL6 at our yard? Please let us know.

## Maten / Gewichten

L\*W\*H: **3.50 x 1.10 x 1.29**  
Weight: **3300**

## Technische informatie

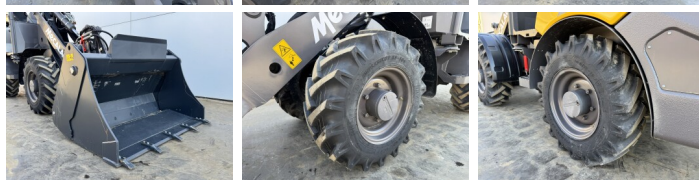
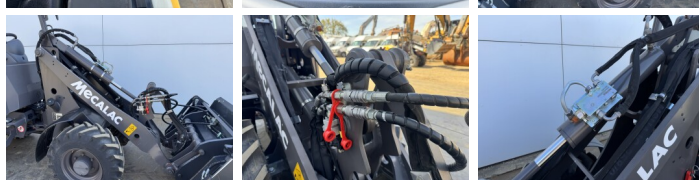
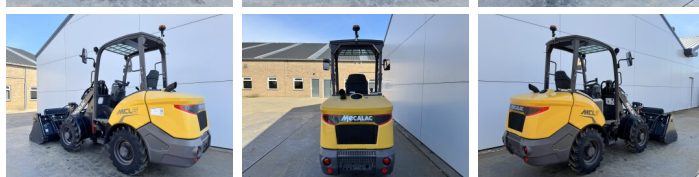
German Machine  
Drive configurations **4x4**

## Motor informatie

Engine brand: **Perkins**  
Engine model: **TCD 1.7 L3**  
Cylinders: **3**  
Turbo  
Capacity in kW: **36**

## Banden / Rupsen

100% 100% **10.0/75-16.3**  
100% 100% **10.0/75-16.3**



# Optics

---

Quick coupler