

Caterpillar

Caterpillar 988H

Year 2008
Reference number BM005696
Hours 43.358

Algemeen

Type 988H
Location Veldhoven, Netherlands
Certificaat CE + EPA
Chassis nummer CAT0988HJBXY02185

Available at Boss Machinery! This Caterpillar 988H Wheel Loader from 2008 has an engine power of 373 kW and counts 43358 operational hours. The total weight of this Caterpillar 988H is 56276 kg and the dimensions are 11.90 x 3.95 x 4.15. Furthermore, this 988H is equipped with Air Conditioning, Heated Cab, Backup alarm, Radio, Camera, Extra hydraulic function. The Caterpillar Wheel Loader also has a CE + EPA marking. Do you want more information or do you want to try the Caterpillar 988H at our yard? Please let us know.

Maten / Gewichten

Weight: 56276
L*W*H: 11.90 x 3.95 x 4.15

Technische informatie

Drive configurations 4 x 4

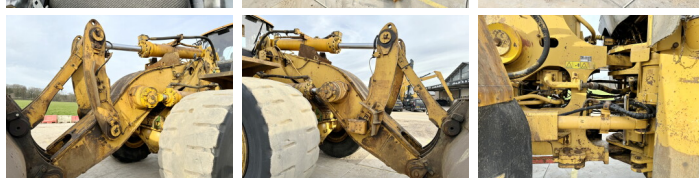
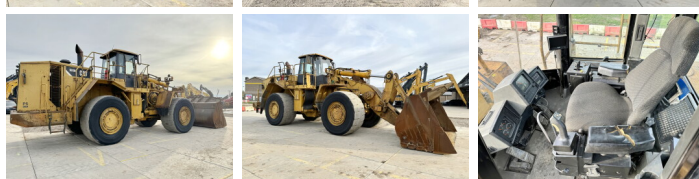
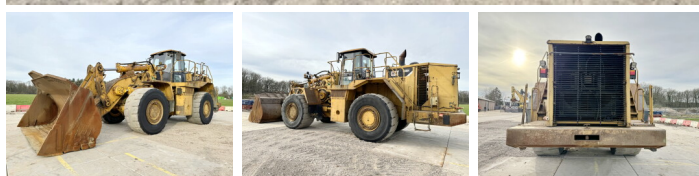
Motor informatie

Engine brand: Caterpillar
Engine model: C18
Cylinders: 6
Turbo
Capacity in kW: 373

Banden / Rupsen

30% 20% 35 / 65 R 33
30% 20% 35 / 65 R 33

BOSS
MACHINERY



Opties

Air Conditioning

Heated Cab

Backup alarm

Radio

Camera

Extra hydraulic function