

Volvo

## Volvo L90F

€ 49.500excl.

Year 2009  
Reference number BM005655  
Hours 18.606

### Algemeen

Type L90F  
Location Veldhoven, Netherlands  
Dutch vehicle  
Certificaat CE + EPA  
Chassis nummer VCE0L90FV00026989

### Description

Available at Boss Machinery! This Volvo L90F Wheel Loader from 2009 has an engine power of 119 kW and counts 18606 operational hours. Always worked in The Netherlands. The total weight of this Volvo L90F is 17100 kg and the dimensions are 8.10 x 2.85 x 3.27. Furthermore, this L90F is equipped with Quick coupler, Radio, Heated Cab, Weighing system, Air Conditioning, Central greasing. The Volvo Wheel Loader also has a CE + EPA marking. Do you want more information or do you want to try the Volvo L90F at our yard? Please let us know.

### Maten / Gewichten

Weight: 17100  
L\*W\*H: 8.10 x 2.85 x 3.27

### Technische informatie

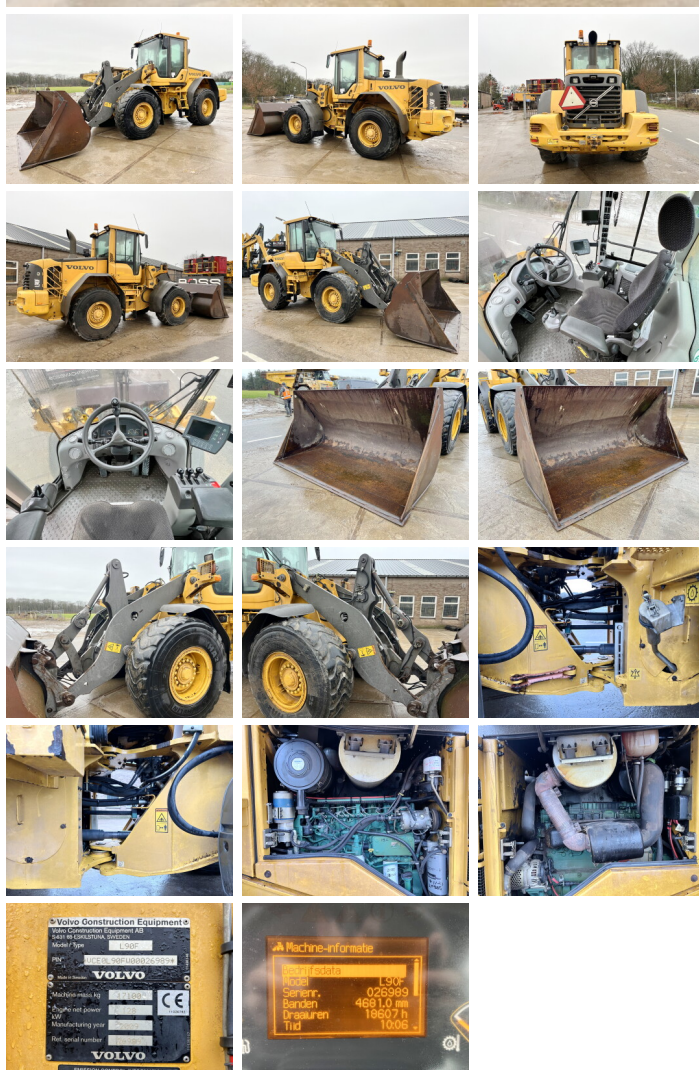
Drive configurations 4x4

### Motor informatie

Engine brand: Volvo  
Engine model: D6E  
Cylinders: 6  
Turbo  
Capacity in kW: 119

### Banden / Rupsen

**BOSS**  
MACHINERY



50%	50%	20.5R25
50%	50%	20.5R25

## Opties

---

Quick coupler  
Radio  
Heated Cab  
Weighing system  
Air Conditioning  
Central greasing