

Caterpillar

Caterpillar 928G

BOSS
MACHINERY

Year **1997**
Reference number **BM005541**
Hours **10.097**

Algemeen

Type **928G**
Location **Veldhoven, Netherlands**
Dutch vehicle
First owner
Certificaat **CE**
Chassis nummer **7SR00252**

Description

Available at Boss Machinery! This Caterpillar 928G Wheel Loader from 1997 has an engine power of 93 kW and counts 10097 operational hours. Always worked in The Netherlands. Bought from the first owner. The total weight of this Caterpillar 928G is 12600 kg and the dimensions are 7.65 x 2.75 x 3.30. Furthermore, this 928G is equipped with Central greasing. The Caterpillar Wheel Loader also has a CE marking. Do you want more information or do you want to try the Caterpillar 928G at our yard? Please let us know.

Maten / Gewichten

L*W*H: **7.65 x 2.75 x 3.30**
Weight: **12600**

Technische informatie

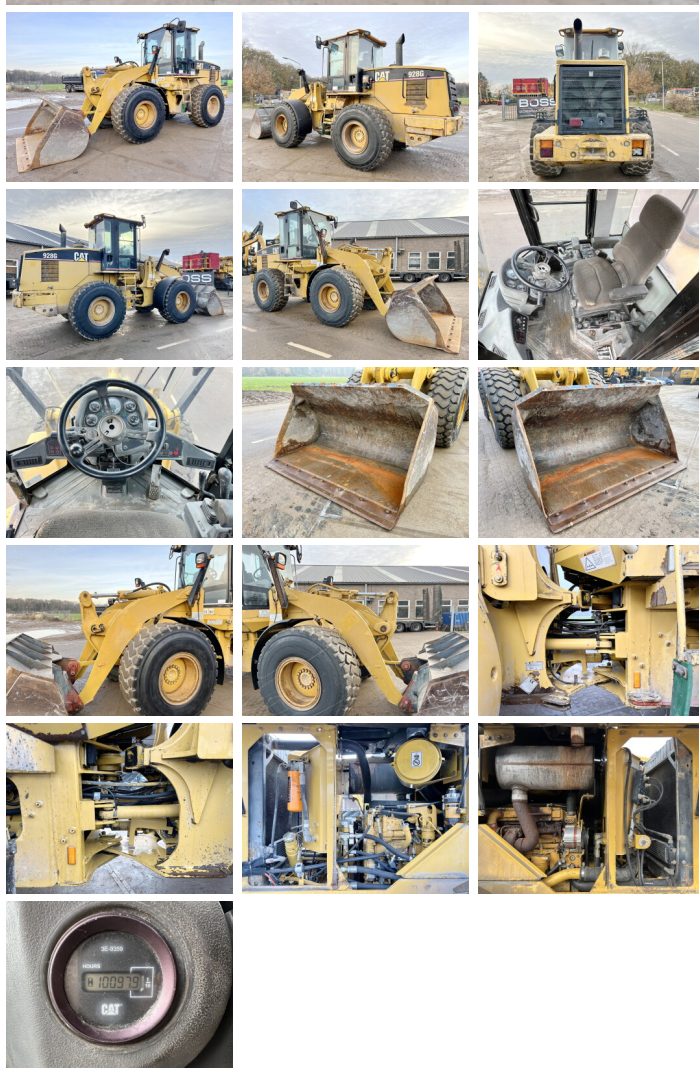
Drive configurations **4 x 4**

Motor informatie

Engine brand: **Caterpillar**
Engine model: **3116T**
Cylinders: **6**
Turbo
Capacity in kW: **93**

Banden / Rupsen

70% 70% **20.5 R25**
70% 70% **20.5 R25**



Opties

Central greasing