

Volvo

Volvo EC250DL

BOSS
MACHINERY

Year **2013**
Reference number **BM007770**
Hours **102.634**

Algemeen

Type **EC250DL**
Location **Veldhoven, Netherlands**
Certificaat **CE**

Description

Available at Boss Machinery! This Volvo EC250DL Excavators from 2013 has an engine power of 152 kW and counts 102634 operational hours. The total weight of this Volvo EC250DL is 27400 kg and the dimensions are 10.50 x 3.38 x 3.01. Furthermore, this EC250DL is equipped with Quick coupler, Radio, Camera, Hammer function, Central greasing. The Volvo Excavators also has a CE marking. Do you want more information or do you want to try the Volvo EC250DL at our yard? Please let us know.

Maten / Gewichten

L*W*H: **10.50 x 3.38 x 3.01**
Weight: **27400**

Technische informatie

German Machine

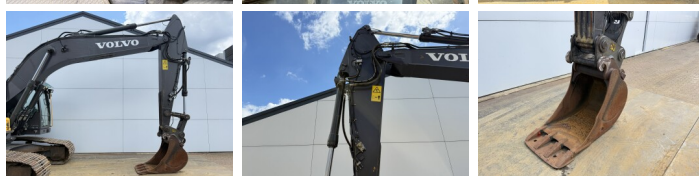
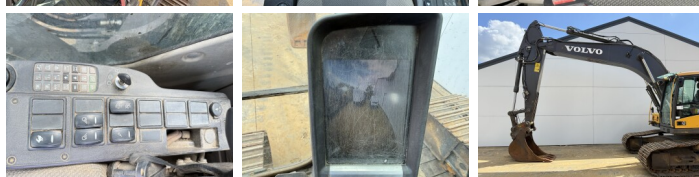
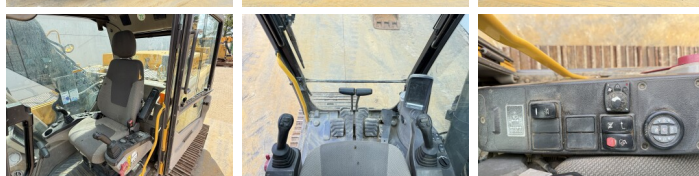
Motor informatie

Engine brand: **Volvo**
Engine model: **D8H**
Cylinders: **6**
Capacity in kW: **152**

Banden / Rupsen

Plate % **80**
Sprocket % **80**
Chain % **80**
Plate width: **80 cm**

Opties



Quick coupler

Radio

Camera

Hammer function

Central greasing