

Hyundai

Hyundai R215L Smart X Plus *2026 Model*

€ 69.500excl.

Year **2026**
Reference number **BM007548**
Hours **5**

Algemeen

Type R215L Smart X Plus *2026 Model*
Location Veldhoven, Netherlands
Available at Boss Machinery! This Hyundai R215L Smart X Plus *2026 Model* Excavators from 2026 has an engine power of 148 kW and counts 5 operational hours. The total weight of this Hyundai R215L Smart X Plus *2026 Model* is 22200 kg and the dimensions are 9.51 x 3.00 x 3.33. Furthermore, this R215L Smart X Plus *2026 Model* is equipped with Radio, Extra hydraulic function, Hammer function. Do you want more information or do you want to try the Hyundai R215L Smart X Plus *2026 Model* at our yard? Please let us know.

Maten / Gewichten

Weight: 22200
L*W*H: 9.51 x 3.00 x 3.33

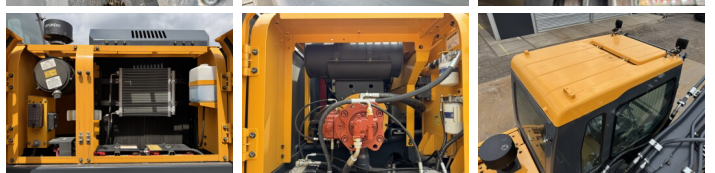
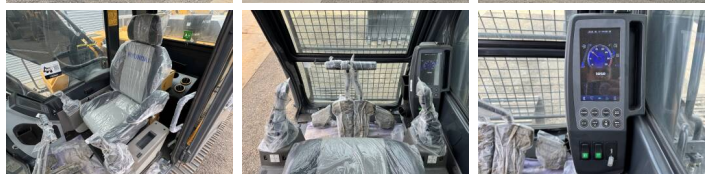
Motor informatie

Engine brand: Cummins
Engine model: 6BTAA 5.9 148C
Cylinders: 6
Turbo
Capacity in kW: 148

Banden / Rupsen

Plate % 100
Sprocket % 100
Chain % 100
Plate width: 60 cm

BOSS
MACHINERY



Opties

Radio

Extra hydraulic function

Hammer function