

Hyundai

# Hyundai R340L Smart

**BOSS**  
MACHINERY

€ 113.950excl.

Year **2026**  
Reference number **BM006847**  
Hours **5**

## Algemeen

Type R340L Smart  
Location Veldhoven, Netherlands  
Certificaat NOT FOR SALE IN EU / NO CE MARK  
Available at Boss Machinery! This used Hyundai R340L Smart Excavators from 2026 has an engine power of 206 kW and counts 5 operational hours. The total weight of this Hyundai R340L Smart is 33800 kg and the dimensions are 11.45 x 3.30 x 3.55. Furthermore, this R340L Smart is equipped with Air Conditioning, Extra hydraulic function, Hammer function. The Hyundai Excavators also has a NOT FOR SALE IN EU / NO CE MARK marking. Do you want more information or do you want to try the Hyundai R340L Smart at our yard? Please let us know.

## Maten / Gewichten

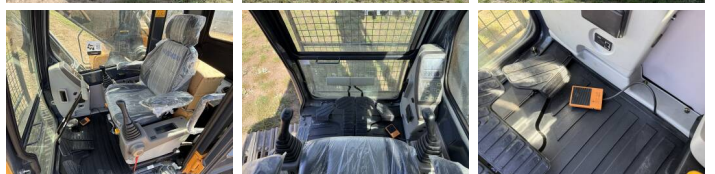
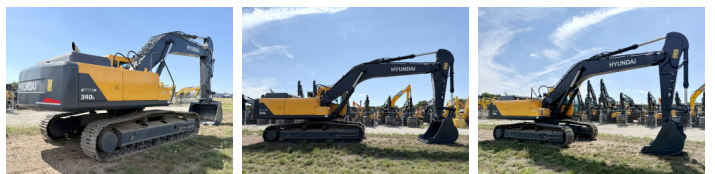
L\*W\*H: 11.45 x 3.30 x 3.55  
Weight: 33800

## Technische informatie

Bucket Range cu.m: 1.44- 2.1  
Maximum Digging Depth: 6820 mm  
Swing Speed: 9.5 rpm

## Motor informatie

Engine brand: Hyundai  
Engine model: D6AC-C1  
Cylinders: 6  
Turbo  
Capacity in kW: 206



## **Banden / Rupsen**

---

Plate %	100
Sprocket %	100
Chain %	100
Plate width:	60 cm

## **Opties**

---

Air Conditioning  
Extra hydraulic function  
Hammer function