

Kobelco

## Kobelco SK380XDLC-10

€ 65.000excl.

Year	2019
Reference number	BM005267
Hours	8.102

### Algemeen

Type	SK380XDLC-10
Location	Veldhoven, Netherlands
Certificaat	EPA

### Description

Available at Boss Machinery! This Kobelco SK380XDLC-10 Excavator from 2019 has an engine power of 188 kW and counts 8102 operational hours. The total weight of this Kobelco SK380XDLC-10 is 38500 kg and the dimensions are 11.55 x 3.19 x 3.80. Furthermore, this SK380XDLC-10 is equipped with Extra hydraulic function, Hammer function. The Kobelco Excavator also has a EPA marking. Do you want more information or do you want to try the Kobelco SK380XDLC-10 at our yard? Please let us know.

### Maten / Gewichten

Weight:	38500
L*W*H:	11.55 x 3.19 x 3.80

### Motor informatie

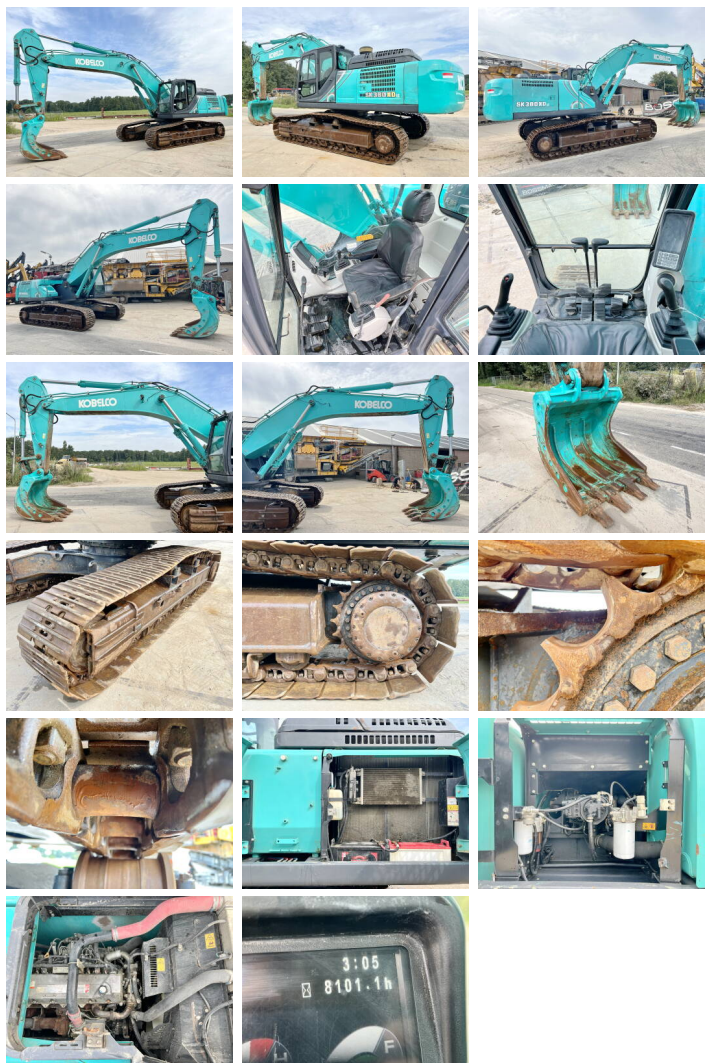
Engine brand:	HINO
Engine model:	J08E-TI
Cylinders:	6
Turbo	
Capacity in kW:	188

### Banden / Rupsen

Chain %	40
Plate %	15
Sprocket %	40
Plate width:	60 cm

### Opties

**BOSS**  
MACHINERY



Extra hydraulic function  
Hammer function